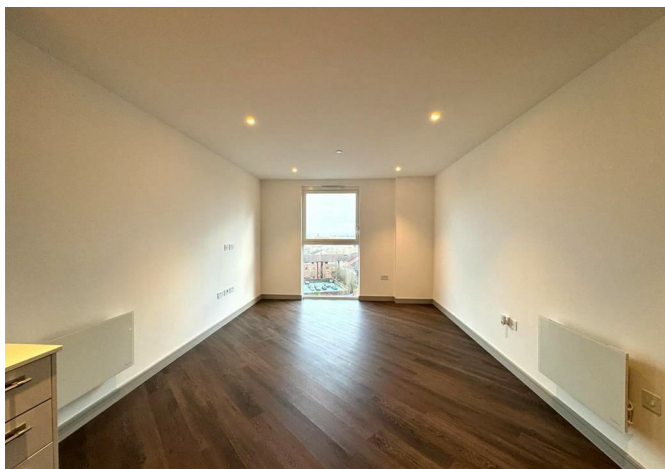
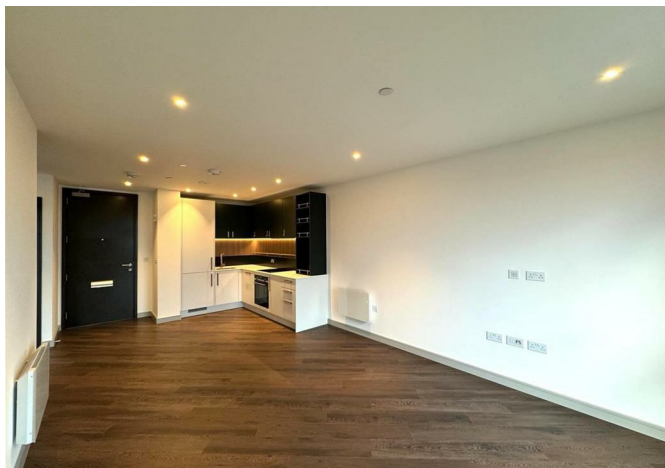




70 Lavender House 1 Eden Grove, Staines, Surrey, TW18 4ZW

£1,500 Per month



70 Lavender House 1 Eden Grove, Staines, Surrey, TW18 4ZW

£1,500 Per month

New to the market, this impressive seventh floor one bedroom executive apartment is located in the sought after Berkeley Homes Eden Grove development.

The property itself benefits from a large open plan living area with Karndean wooden flooring, stylish black and white kitchen with integrated appliances including washer / dryer and dishwasher, double bedroom with large built in wardrobe, luxury bathroom suite with bath and rain shower, secure video phone entry system and neutral decoration throughout.

Residents have access to an on site 24 hour concierge service, co-working facility with private meeting room, large gymnasium, cinema room, internal courtyard garden and bike storage.

* Sorry this property does not come with allocated parking. However there are numerous private options available locally if required, and a Car club / electric vehicle charging on site if required. *

Eden Grove is just a five minute walk from Staines town centre and the mainline railway station. The M25 is a five minute drive away, offering easy access to Heathrow Airport.

Description

Situation

Unfurnished

Council Tax Band: C

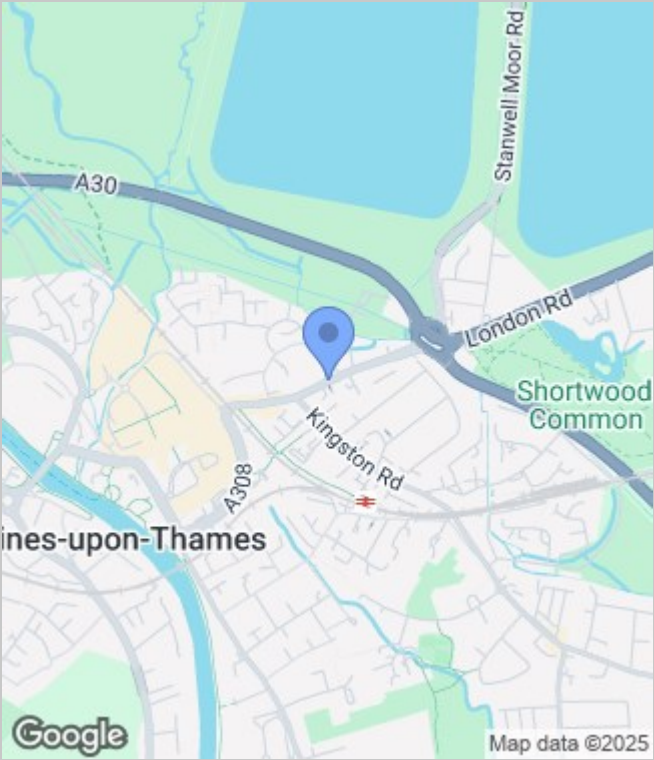
Available: 2nd May 2025



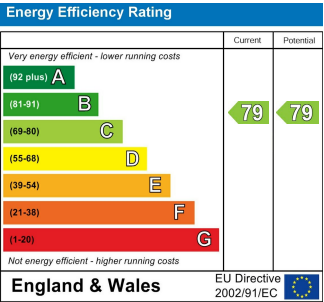
Floor Plans



Area Map



Energy Performance Graph



These particulars, whilst believed to be accurate are set out as a general outline only for guidance and do not constitute any part of an offer or contract. Intending purchasers should not rely on them as statements of representation of fact, but must satisfy themselves by inspection or otherwise as to their accuracy. No person in this firms employment has the authority to make or give any representation or warranty in respect of the property.