



BRICK
MANAGEMENT + LETTINGS

4 Eccleston Close, Orpington, BR6 8BD

£2,875 Per month



4 Eccleston Close, Orpington, BR6 8BD

£2,875 Per month

New to the market, this impressive, spacious unfurnished semi-detached four bedroom bungalow is located in a quiet cut-de-sac location, close to Orpington town centre.

The property itself benefits from a hallway with under-stair storage, large living room with feature fireplace and patio doors to large rear deck area, spacious dining area with French doors to decking, modern kitchen with integrated appliances and breakfast bar, large downstairs double bedroom with storage, downstairs single bedroom, downstairs stylish shower room, large upstairs master bedroom with four fitted wardrobes, family bathroom with plain suite and a second smaller upstairs double bedroom.

The large garage at the rear of the property has been converted into a workshop / storage area, with a study room. To the front you have driveway parking for two vehicles.

The house is set in beautifully landscaped grounds which wrap around the right hand side to the rear and consist of a large paved patio area, large rear deck and a large rear lawn with storage shed.

Eccleston Close is just a short walk from Orpington town centre, the mainline railway station, Sainsbury's supermarket and numerous local schools.

Description



Situation

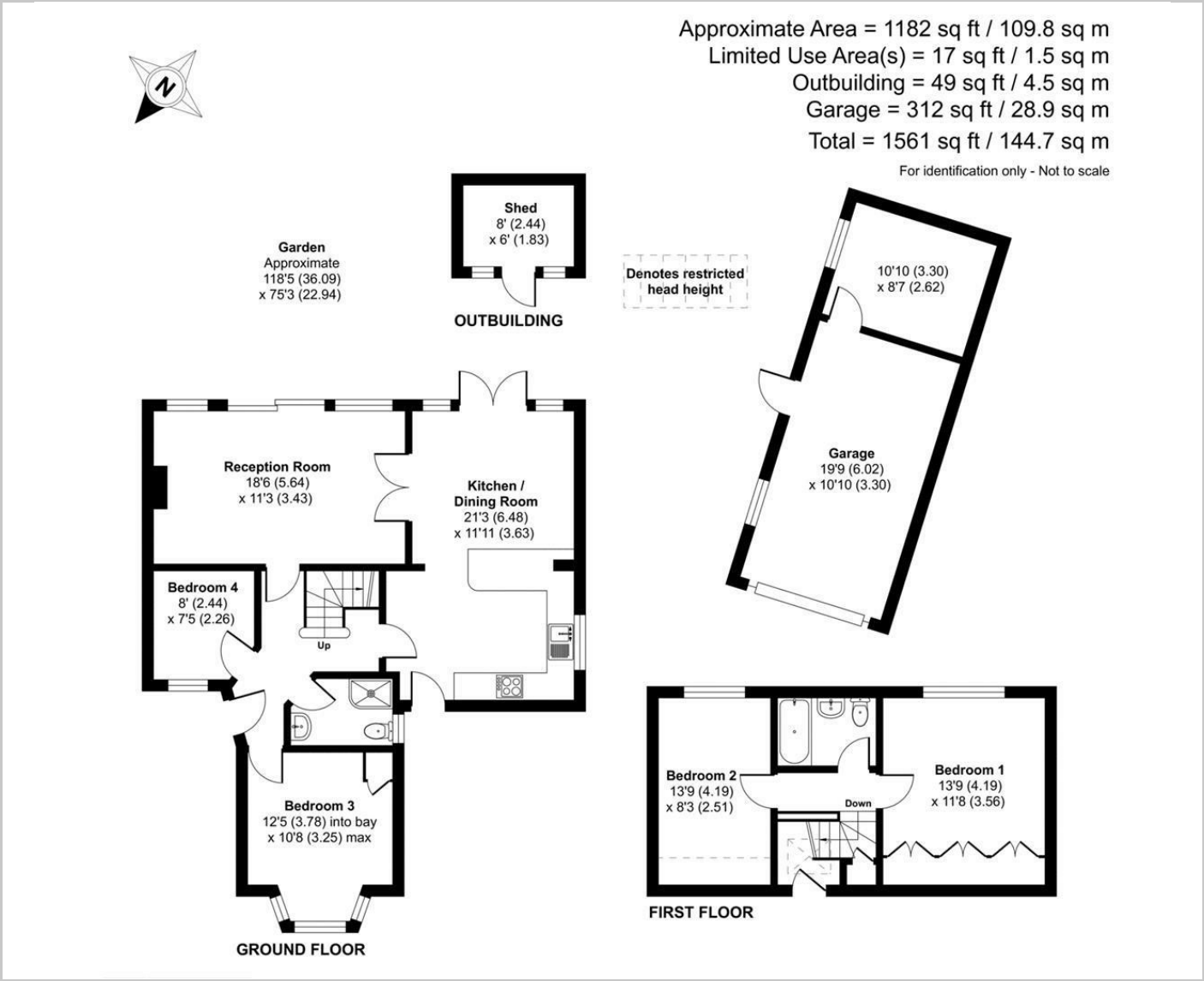


Unfurnished

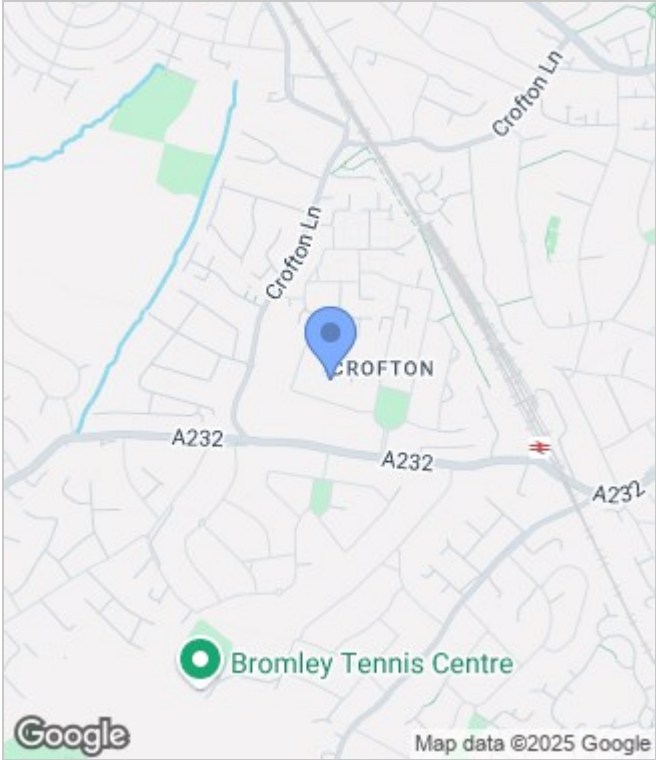
Council Tax Band: F

Available: 8th April 2025

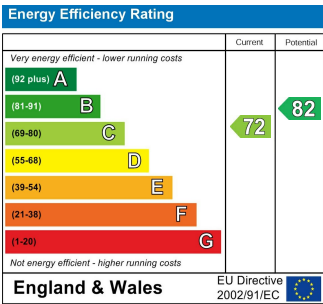
Floor Plans



Area Map



Energy Performance Graph



These particulars, whilst believed to be accurate are set out as a general outline only for guidance and do not constitute any part of an offer or contract. Intending purchasers should not rely on them as statements of representation of fact, but must satisfy themselves by inspection or otherwise as to their accuracy. No person in this firms employment has the authority to make or give any representation or warranty in respect of the property.