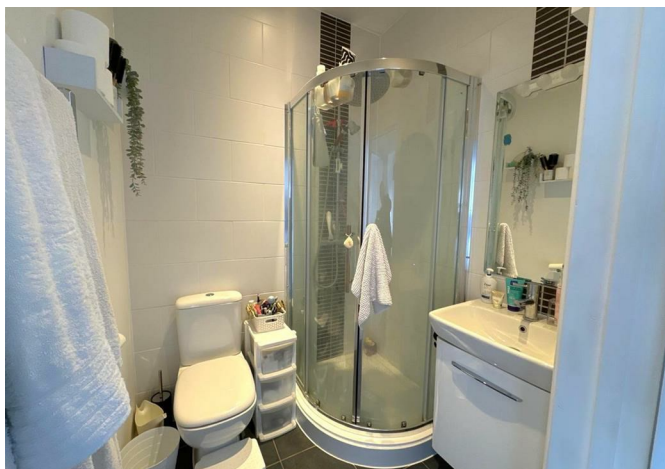
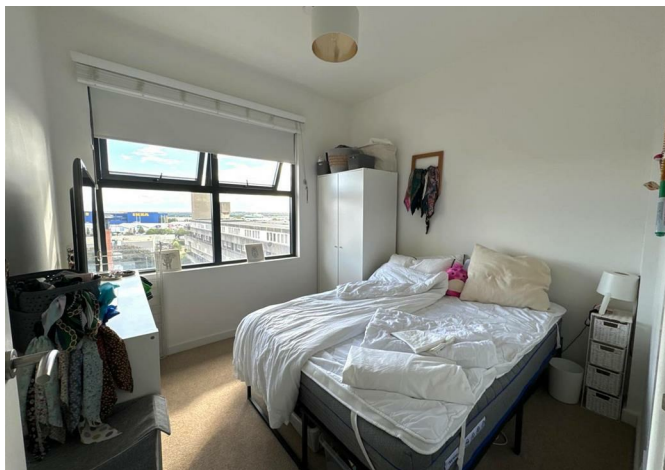




BRICK
MANAGEMENT + LETTINGS

27 Pilgrim House 22-26 Commercial Road, Southampton, Hampshire, SO15 1GE

£925 Per month



27 Pilgrim House 22-26 Commercial Road, Southampton, Hampshire, SO15 1GE

£925 Per month

New to the market, this well presented, fifth floor modern unfurnished one bedroom apartment is located in the popular Pilgrim House development.

This property benefits from an open plan living area, modern white kitchen with appliances, double bedroom, luxury shower room, secure entry phone access and neutral decoration throughout.

Pilgrim House is just a few minutes walk from Southampton centre, mainline railway station and the University.

* Sorry no allocated parking with this unit *

Description

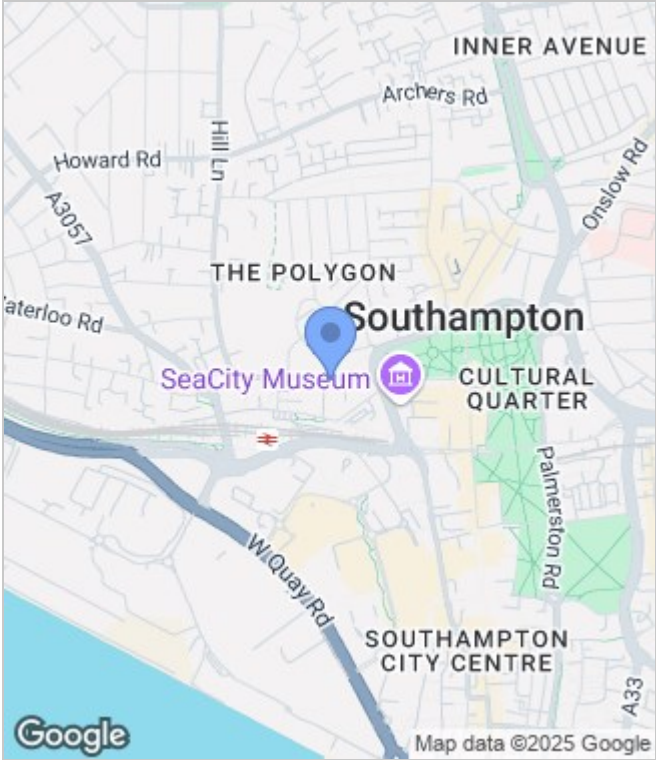
Situation

Unfurnished
Council Tax Band:
Available: 21st April 2025

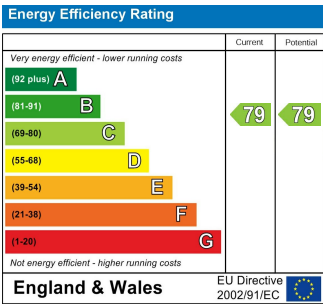
Floor Plans



Area Map



Energy Performance Graph



These particulars, whilst believed to be accurate are set out as a general outline only for guidance and do not constitute any part of an offer or contract. Intending purchasers should not rely on them as statements of representation of fact, but must satisfy themselves by inspection or otherwise as to their accuracy. No person in this firms employment has the authority to make or give any representation or warranty in respect of the property.