

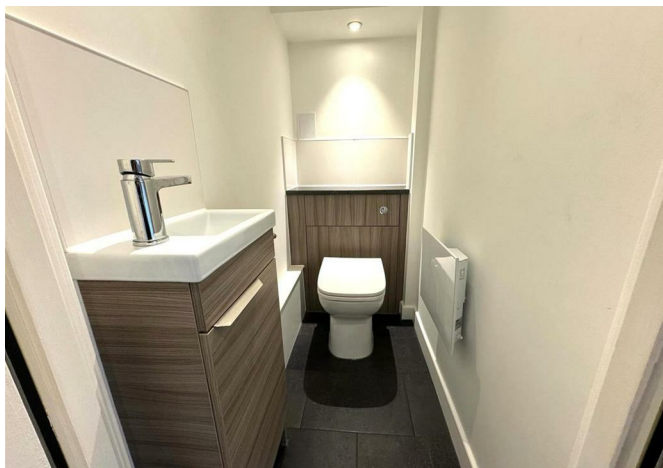
**BRICK**  
MANAGEMENT + LETTINGS



44 Wraysbury House 4-16 London Road, Staines-Upon-Thames, London, TW18 4BP

**£1,395 Per month**





44 Wraysbury House 4-16 London Road, Staines-Upon-Thames, London, TW18 4BP

**£1,395 Per month**

New to the market, this impressive unfurnished, one bedroom split level apartment, is located in the sought after Wraysbury House development.

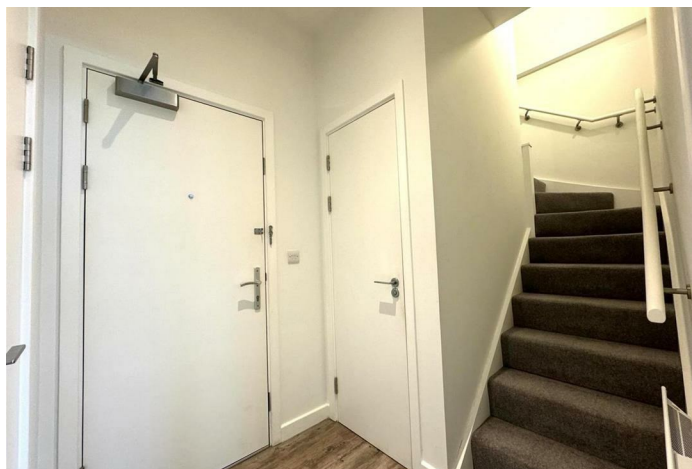
This well presented property benefits from an entrance hallway with large utility cupboard leading to an open plan living area with wooden effect flooring, stylish grey kitchen with appliances, downstairs WC, large double bedroom with fitted wardrobe, luxury bathroom suite with bath and separate shower cubicle, neutral decoration throughout and secure entry-phone access.

The property has secure underground parking with one allocated space.

Wraysbury House is just a five minute walk from Staines centre and mainline railway station. The M25 is just a five minute drive away, offering easy access to Heathrow Airport.

## Description

## Situation



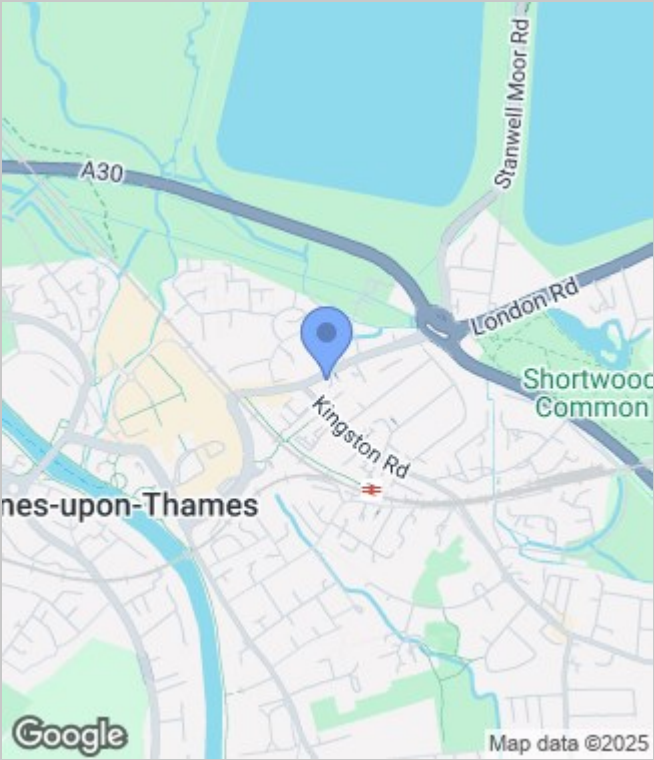
Unfurnished  
Council Tax Band: C  
Available: 27th May 2025



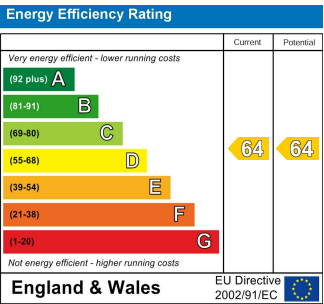
Floor Plans



Area Map



Energy Performance Graph



These particulars, whilst believed to be accurate are set out as a general outline only for guidance and do not constitute any part of an offer or contract. Intending purchasers should not rely on them as statements of representation of fact, but must satisfy themselves by inspection or otherwise as to their accuracy. No person in this firms employment has the authority to make or give any representation or warranty in respect of the property.