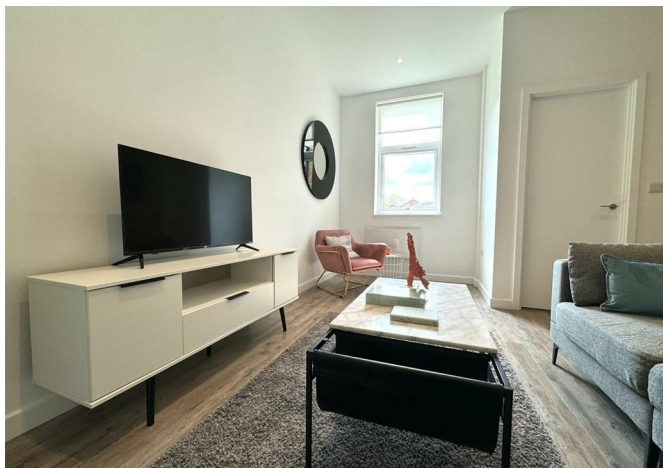
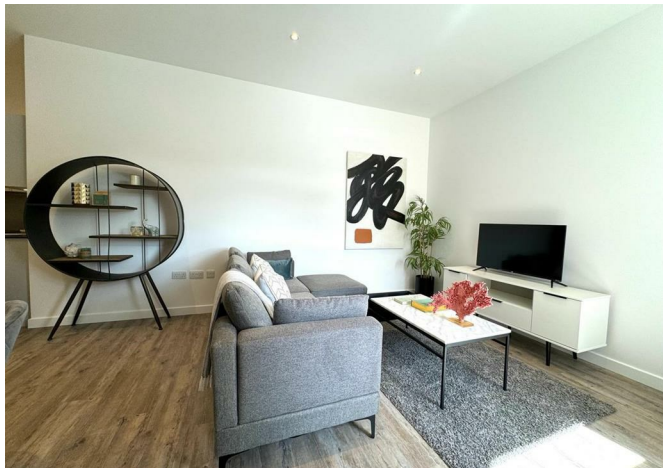




34 Wraysbury House 4-16 London Road, Staines-Upon-Thames, London, TW18 4BP

£1,385 Per month





34 Wraysbury House 4-16 London Road, Staines-Upon-Thames, London, TW18 4BP

**£1,385 Per month**

New to the market, this impressive one bedroom unfurnished executive apartment is located in the sought after Wraysbury House development.

This property benefits from an open plan living area with wooden effect flooring and high ceiling, stylish grey fully fitted kitchen, double bedroom with fitted wardrobe, luxury bathroom with shower and bath, neutral decoration throughout and secure entry-phone access.

The property has one secure allocated parking space in the underground car park.

Wraysbury House is just a five minute walk from Staines centre and mainline railway station, plus a five minute drive from the M25 offering easy access to Heathrow Airport.

\* Please note the furniture is for show purposes only and the apartment comes unfurnished \*

## Description



## Situation



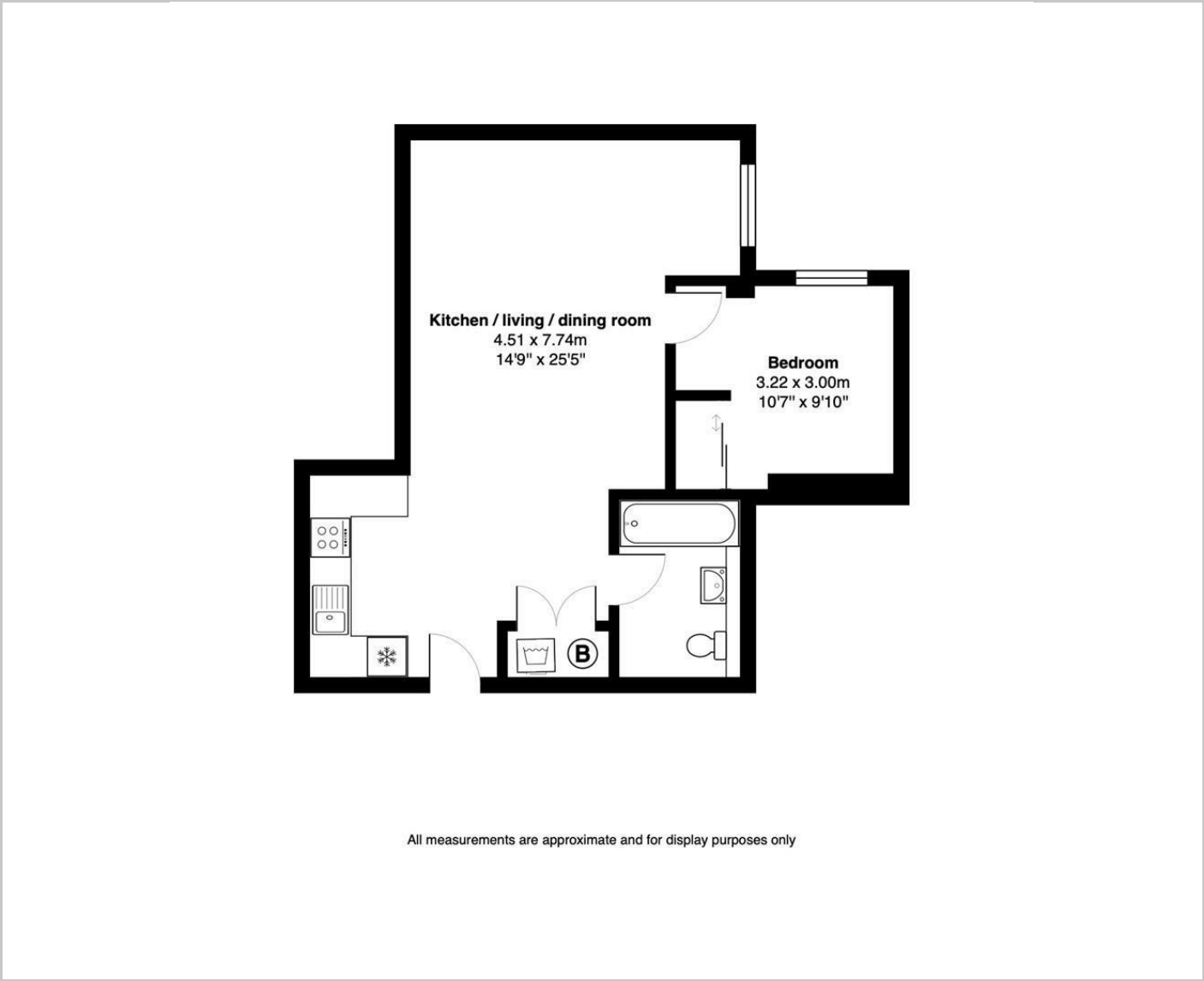
Unfurnished

Council Tax Band: C

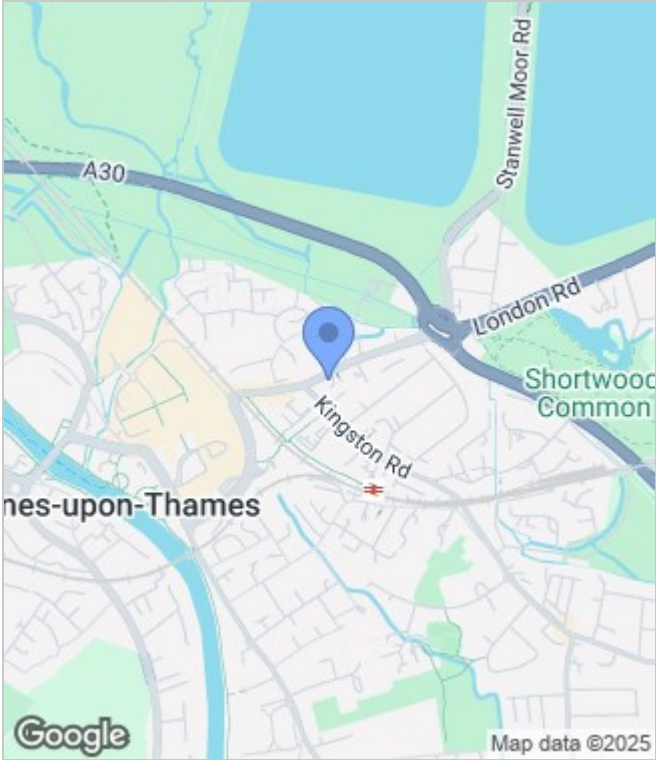
Available: 7th June 2025



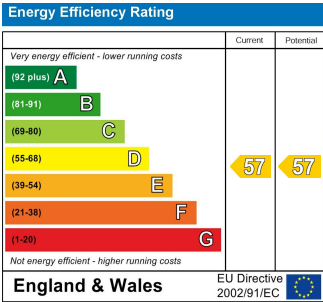
Floor Plans



Area Map



Energy Performance Graph



These particulars, whilst believed to be accurate are set out as a general outline only for guidance and do not constitute any part of an offer or contract. Intending purchasers should not rely on them as statements of representation of fact, but must satisfy themselves by inspection or otherwise as to their accuracy. No person in this firms employment has the authority to make or give any representation or warranty in respect of the property.