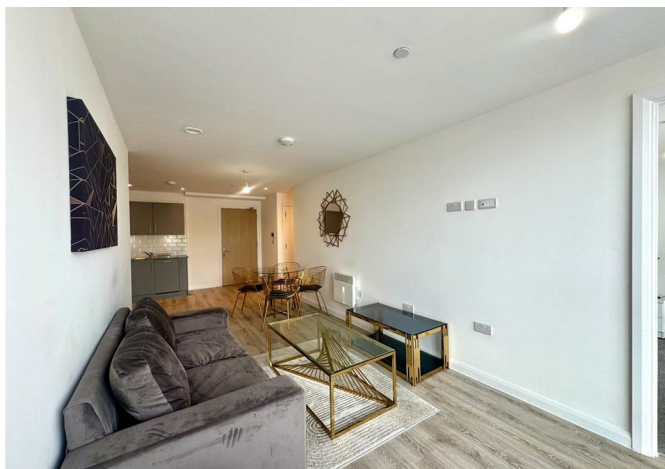




410 Park View 59 Darwin Street, Birmingham, B12 0TW

£1,225 Per month



410 Park View 59 Darwin Street, Birmingham, B12 0TW

£1,225 Per month

This spacious and beautifully presented two double bedroom apartment is located on the fourth floor of the new Park View development, located on the East side of the city centre in the popular Digbeth area.

The property comprises a spacious entrance hallway with ample storage leading into the large open plan living room/dining area with contemporary wooden flooring and modern well-equipped kitchen with integrated appliances. Off the living area are the two large carpeted double bedrooms which both benefit from a stylish ensuite bathroom and ample storage.

Furnished to a very high standard with neutral decoration throughout and secure video-entry access.

Residents of Park View have access to a communal roof terrace and secure communal bike storage.

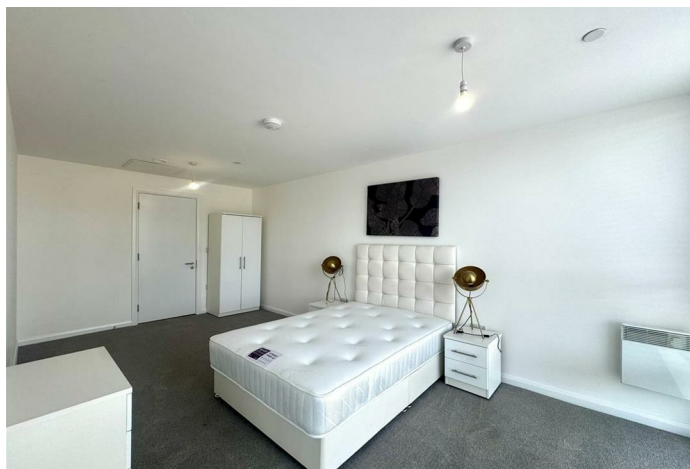
* Sorry, no allocated parking included *

Description

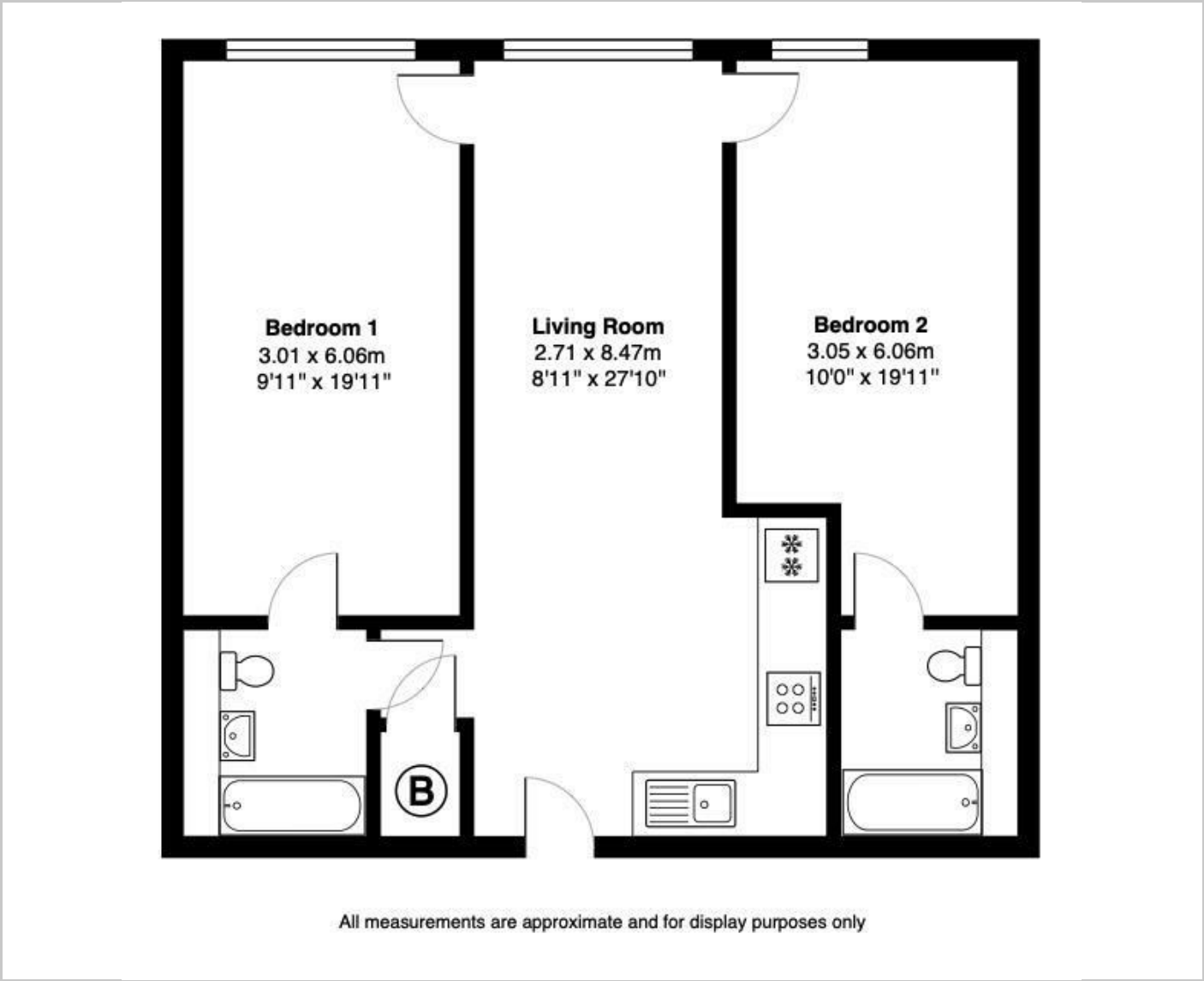
Situation



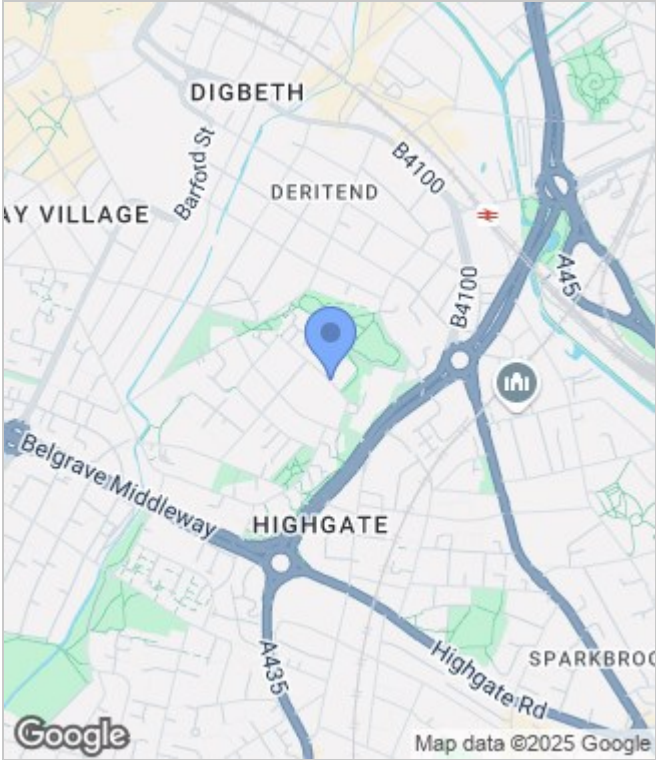
Furnished
Council Tax Band: D
Available: 30th June 2025



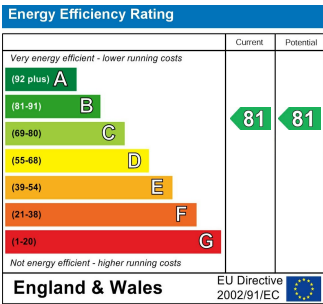
Floor Plans



Area Map



Energy Performance Graph



These particulars, whilst believed to be accurate are set out as a general outline only for guidance and do not constitute any part of an offer or contract. Intending purchasers should not rely on them as statements of representation of fact, but must satisfy themselves by inspection or otherwise as to their accuracy. No person in this firms employment has the authority to make or give any representation or warranty in respect of the property.