



BRICK
MANAGEMENT + LETTINGS

Flat 35, Savoy House Lockgate Road, London, SW6 2WH
£2,935 Per month



Flat 35, Savoy House Lockgate Road, London, SW6 2WH

£2,935 Per month

New to the market, this stunning one bedroom fully furnished apartment is located in the prestigious sought after St George / Berkley Homes Chelsea Creek development.

The apartment itself is set on the fifth floor of Savoy House and benefits from an entrance hallway with two storage cupboards and smart home video entry system leading to a spacious open plan living area with wooden flooring and access to a balcony with city / waterside views, stylish fully equipped kitchen, large double bedroom with double fitted wardrobe, luxury bathroom suite with bath, shower and heated towel rail, plus neutral decoration throughout.

Chelsea Creek is prestigious development, located just moments from the Kings Road and the River Thames. Fulham Broadway underground station is just a stroll away and local amenities include numerous pubs, restaurants and convenience stores.

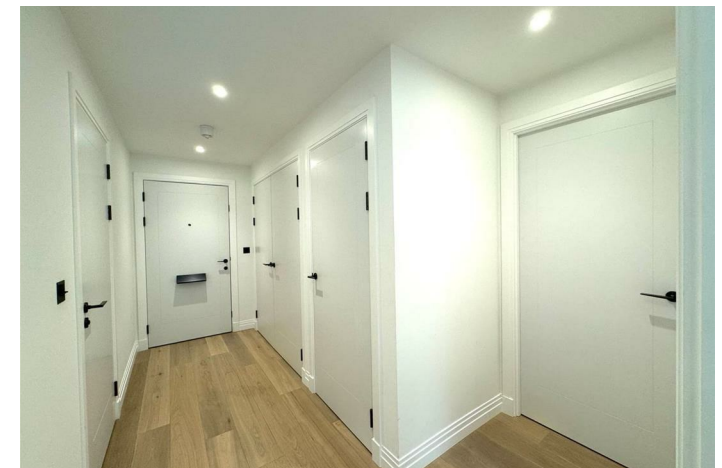
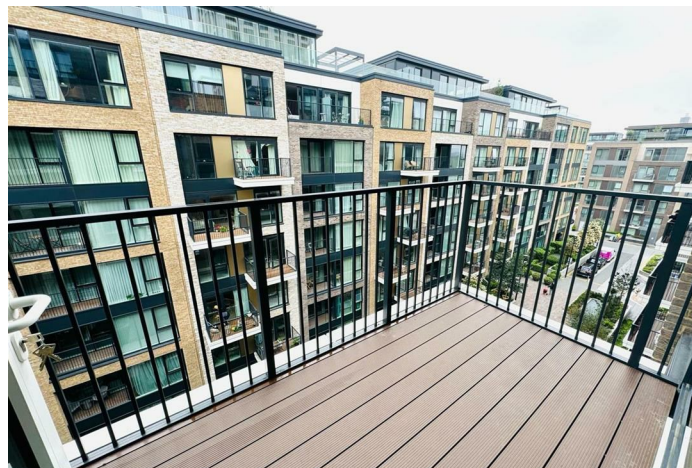
Residents of Savoy House have use of the on site concierge service, wellbeing spa centre with pool and gymnasium, decked and paved outdoor terraces and the impressive Halcyon club with lounge and two cinema rooms.

* Landlord providing new bed shortly *

Description



Situation



Furnished

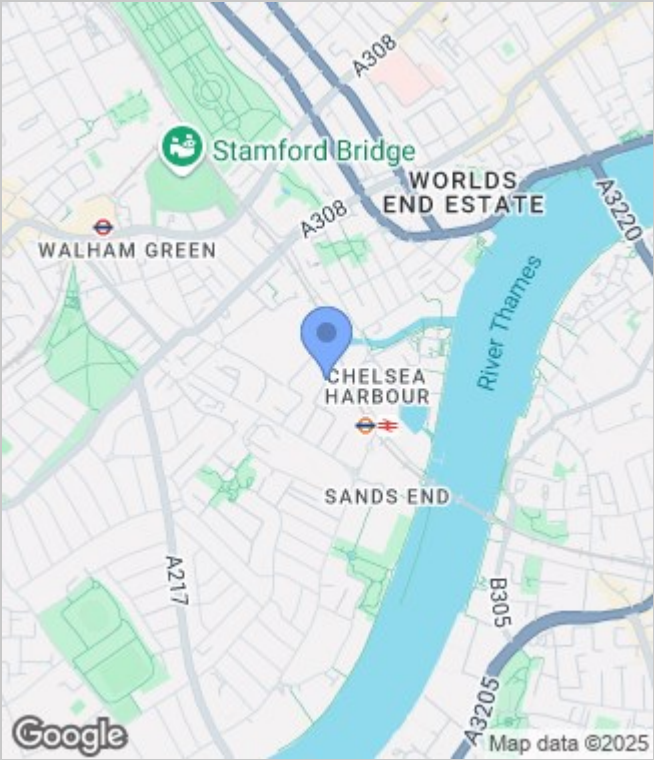
Council Tax Band: E

Available: 16th July 2025

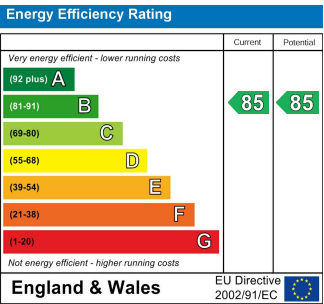
Floor Plans



Area Map



Energy Performance Graph



These particulars, whilst believed to be accurate are set out as a general outline only for guidance and do not constitute any part of an offer or contract. Intending purchasers should not rely on them as statements of representation of fact, but must satisfy themselves by inspection or otherwise as to their accuracy. No person in this firms employment has the authority to make or give any representation or warranty in respect of the property.