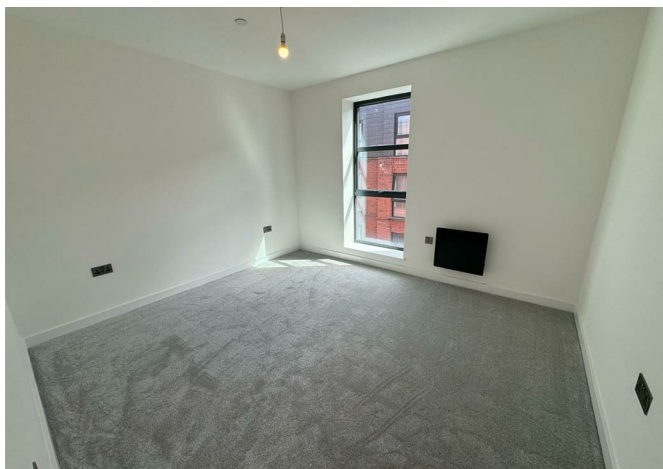




Apartment 10 6 Camden Drive, Birmingham, B1 3LS

£1,100 Per month





## Apartment 10 6 Camden Drive, Birmingham, B1 3LS

**£1,100 Per month**

New to the market, this impressive two double bedroom apartment is located on the second floor of the brand new Scholars Quarter development in the heart of the Jewellery Quarter, just a short walk from Birmingham city centre and numerous local amenities.

The property benefits from an entrance hallway with ample storage, leading into an open plan living / dining area with wooden flooring, stylish grey kitchen with integrated appliances, two large double bedrooms which are both carpeted and a luxury bathroom with bath and shower.

Offered on an unfurnished basis, with secure entry phone access and neutral decoration throughout.

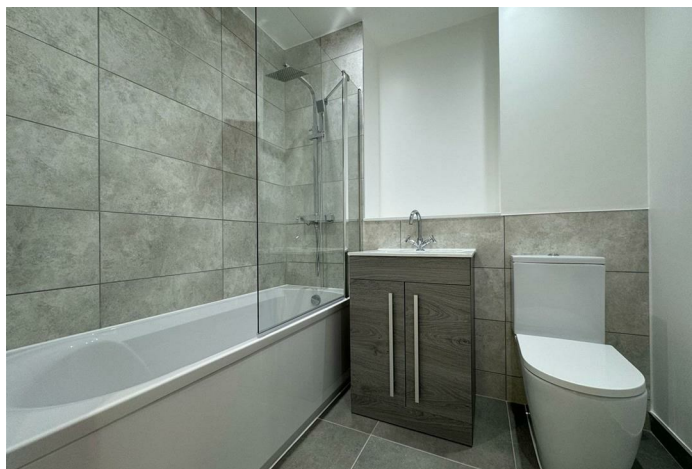
\* Sorry, no allocated parking with this property. \*



## Description



## Situation



Unfurnished

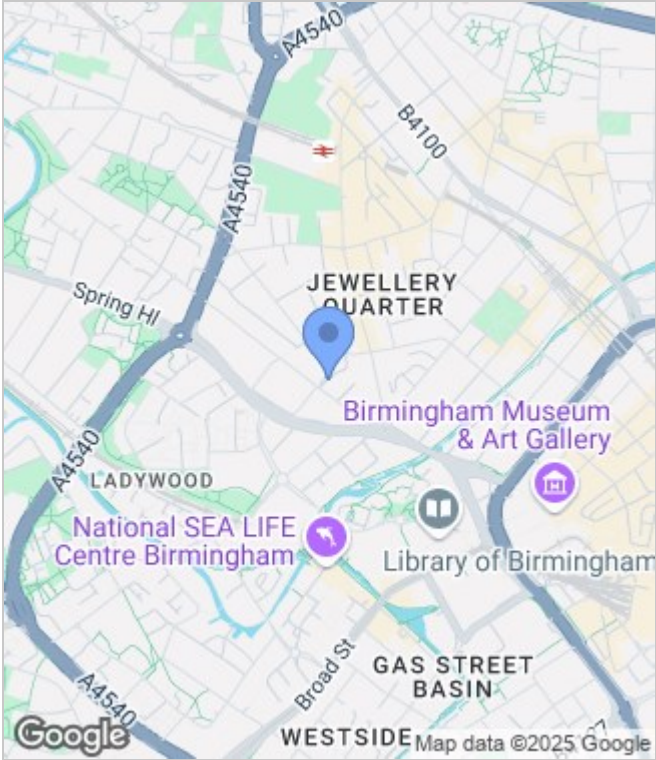
Council Tax Band: New Build

Available: 6th May 2024

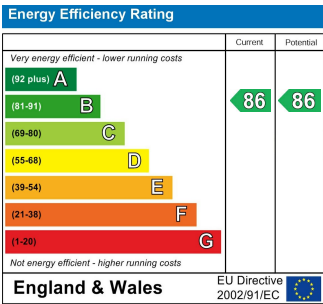
Floor Plans



Area Map



Energy Performance Graph



These particulars, whilst believed to be accurate are set out as a general outline only for guidance and do not constitute any part of an offer or contract. Intending purchasers should not rely on them as statements of representation of fact, but must satisfy themselves by inspection or otherwise as to their accuracy. No person in this firms employment has the authority to make or give any representation or warranty in respect of the property.