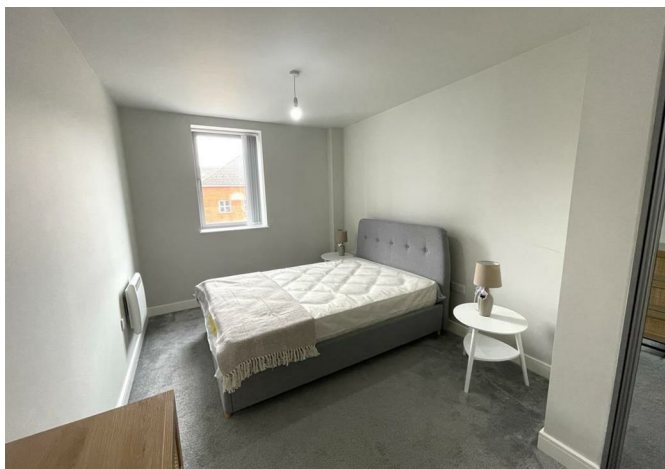
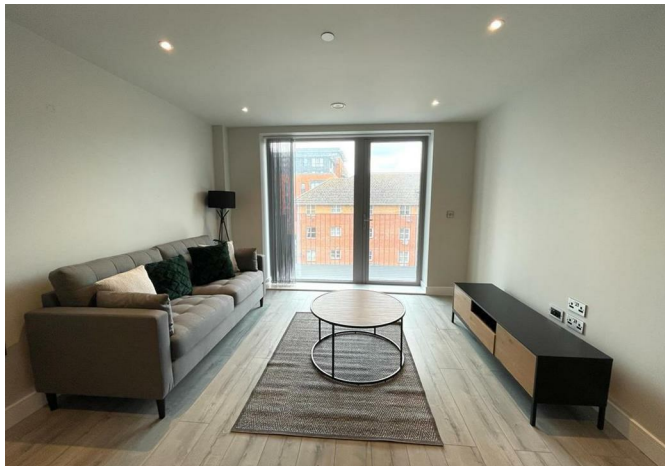




Apartment 64 Steel House Petersfield Avenue, Slough, SL2 5AE

£1,700 Per month



Apartment 64 Steel House Petersfield Avenue, Slough, SL2 5AE

£1,700 Per month

New to the market, this impressive spacious two bedroom third floor furnished executive apartment is located in the popular Steel House development.

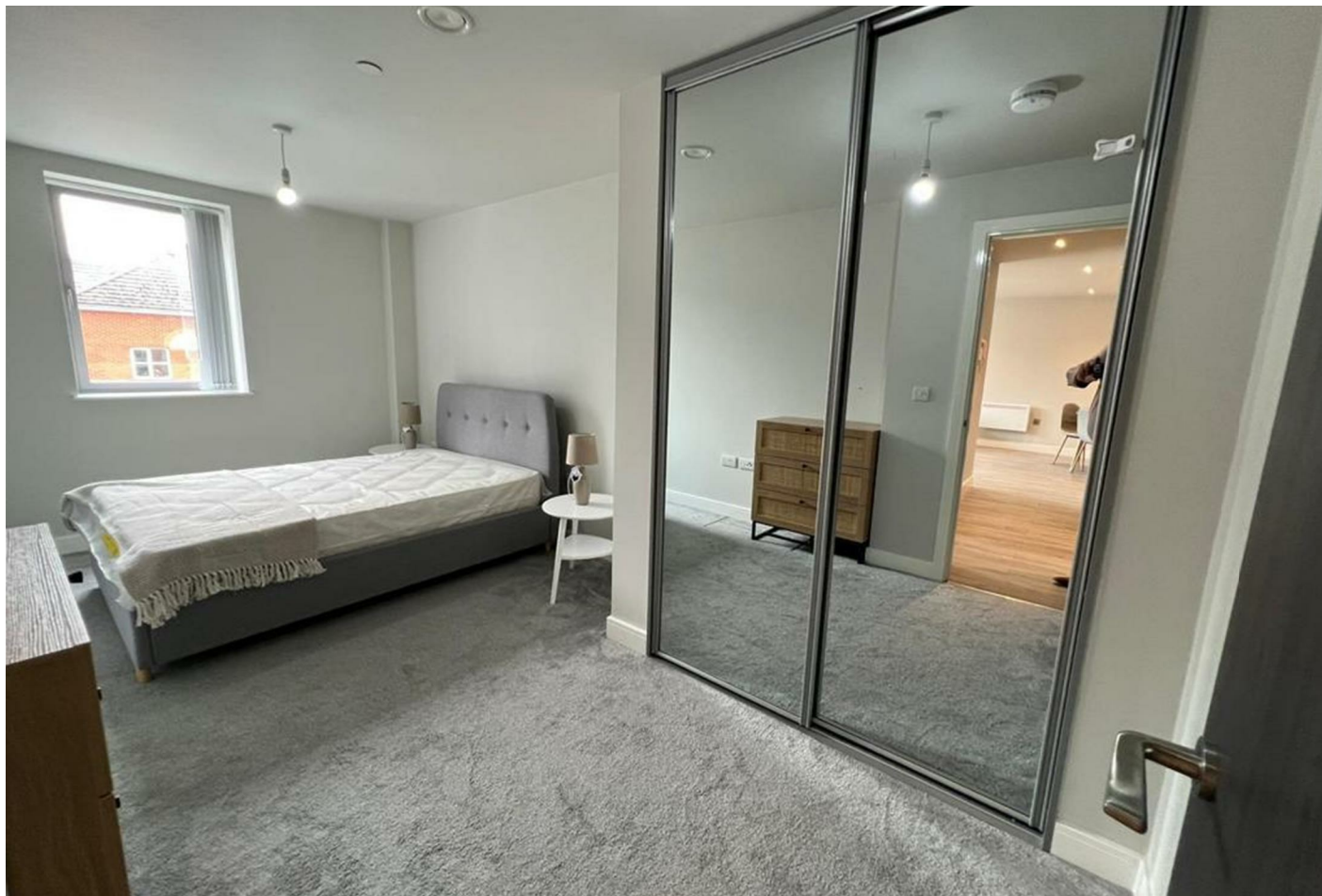
The property itself benefits from a hall with study area leading to a large open plan living / dining area with wood effect flooring and access to a long balcony, stylish kitchen area with integrated appliances, two large double bedrooms with fitted mirrored wardrobes, luxury bathroom suite with bath and shower, secure entry-phone access and contemporary design throughout.

Steel House is just a 5 minute walk from the Slough station on the Elizabeth line, offering 15 minute access into Paddington. The M4 is just a 5 minute drive away.

Slough town centre and all local amenities are just a 10 minute walk away.

* Sorry no allocated parking with this property *

Description

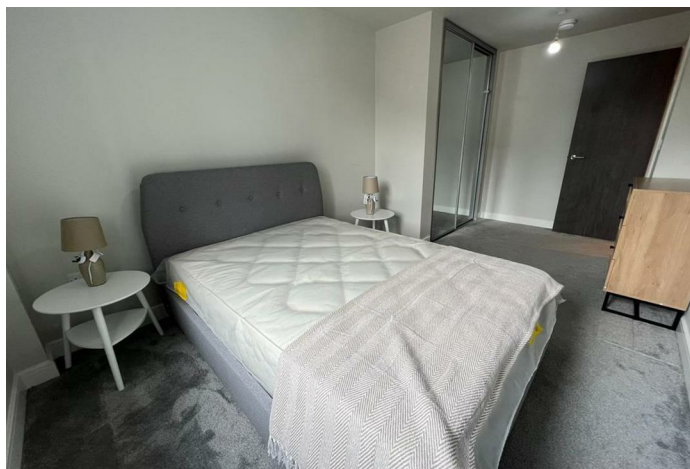


Situation

Furnished

Council Tax Band: C

Available: 6th August 2025



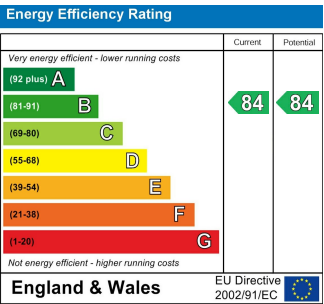
Floor Plans



Area Map



Energy Performance Graph



These particulars, whilst believed to be accurate are set out as a general outline only for guidance and do not constitute any part of an offer or contract. Intending purchasers should not rely on them as statements of representation of fact, but must satisfy themselves by inspection or otherwise as to their accuracy. No person in this firms employment has the authority to make or give any representation or warranty in respect of the property.