



5 Leftwich Place Bures Road, Great Cornard, Suffolk, CO100QW

£1,400 Per month



5 Leftwich Place Bures Road, Great Cornard, Suffolk, CO100QW

£1,400 Per month

New to the market, this stunning two bedroom unfurnished semi-detached house is located in a quiet small cluster of newly built properties in the popular village of Great Cornard.

This impressive property benefits from a small entrance hallway leading to a stylish light grey fully integrated kitchen with separate utility cupboard, large living / dining room with French doors to the rear patio, a spacious downstairs WC, two large upstairs double bedrooms, two luxury bathrooms and neutral decoration throughout.

Residents have access to driveway parking for two vehicles and a large rear paved and lawned private garden with side access.

Leftwich Place is just a short walk from a local amenities including supermarkets, cafe's and a leisure centre. Sudbury town centre and mainline railway station are just a five minute drive away.

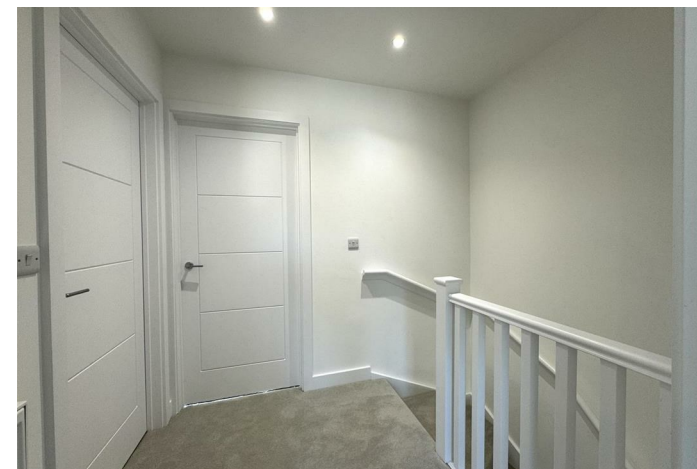
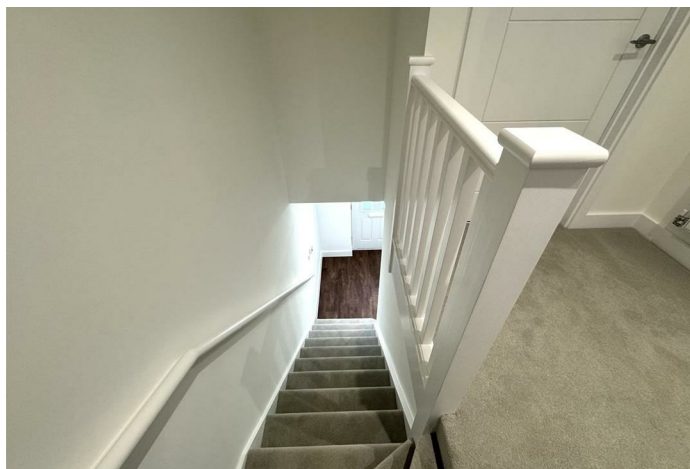
Description

Situation

Unfurnished

Council Tax Band: New Build

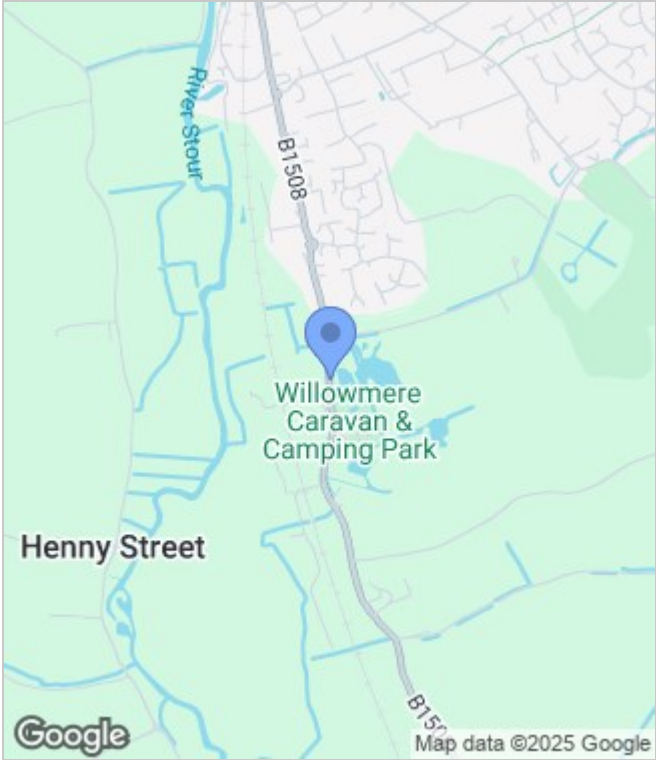
Available: 30th June 2025



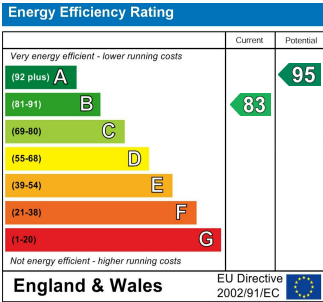
Floor Plans



Area Map



Energy Performance Graph



These particulars, whilst believed to be accurate are set out as a general outline only for guidance and do not constitute any part of an offer or contract. Intending purchasers should not rely on them as statements of representation of fact, but must satisfy themselves by inspection or otherwise as to their accuracy. No person in this firms employment has the authority to make or give any representation or warranty in respect of the property.