



325 Park Gate Coventry Road, Birmingham, B26 3DF

£995 Per month



325 Park Gate Coventry Road, Birmingham, B26 3DF

£995 Per month

New to the market, this spacious and well presented one bedroom apartment is located on the third floor of the popular Park Gate development, situated in the heart of Sheldon just 30-minutes from Birmingham City Centre.

The property benefits from an entrance hallway with ample storage leading into an open plan living room/dinign area and fitted modern kitchen with integrated appliances. Also off the hallway is a large carpeted double bedroom and stylish bathroom with shower. Residents benefit from the use of a lift to all floors and a 24-hour residents-only gym.

Offered on a furnished basis, with neutral decoration throughout and secure-video entry phone access. One allocated parking space is included.

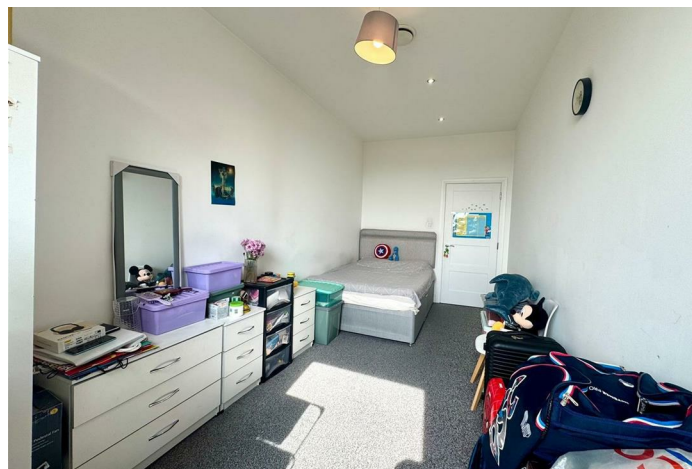
Park Gate has convenient transport links to the city centre, Birmingham airport and Solihull along with numerous amenities within walking distance, including several major supermarkets, petrol stations and several restaurants.

Description

Situation



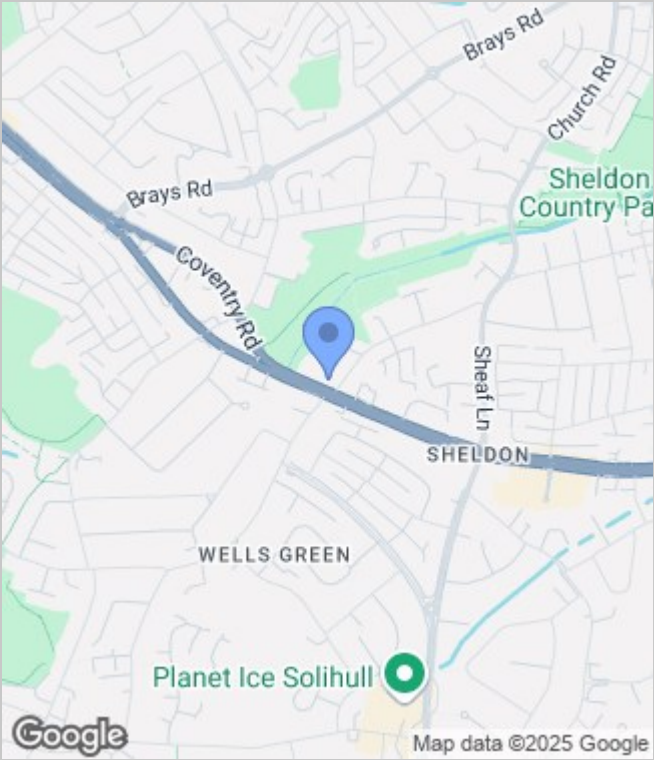
Furnished
Council Tax Band: A
Available: 31st July 2025



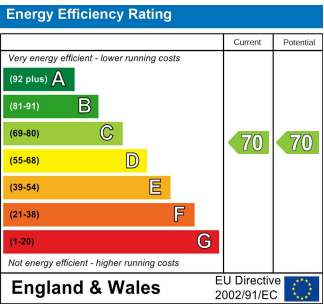
Floor Plans



Area Map



Energy Performance Graph



These particulars, whilst believed to be accurate are set out as a general outline only for guidance and do not constitute any part of an offer or contract. Intending purchasers should not rely on them as statements of representation of fact, but must satisfy themselves by inspection or otherwise as to their accuracy. No person in this firms employment has the authority to make or give any representation or warranty in respect of the property.