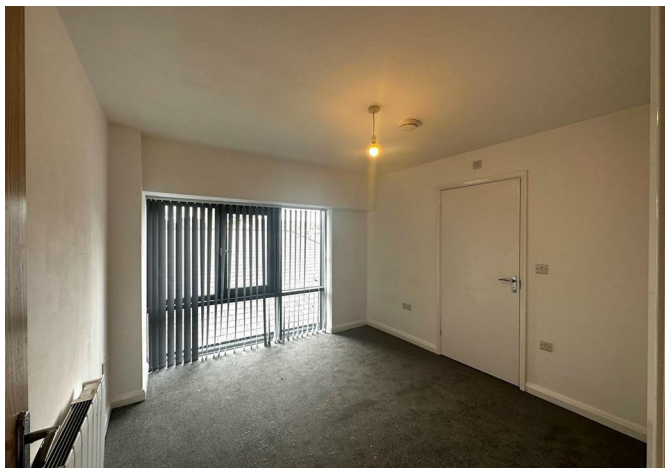




11 Bramble Court Bramble Street, Derby, DE1 1HW

£745 Per month



## 11 Bramble Court Bramble Street, Derby, DE1 1HW

**£745 Per month**

New to the market, this modern and spacious second floor apartment is located in the popular Bramble Court development in the heart of Derby town centre.

The property benefits from a long entrance hallway leading into an open plan living area, white modern kitchen with appliances, large double bedroom and modern bathroom with shower cubicle.

Offered on an unfurnished basis with neutral decoration throughout and secure entry-phone access.

Bramble Court is just a short walk from Derby town centre, local bus station and the Derbion shopping centre.

\* Sorry, no allocated parking space included \*

Description

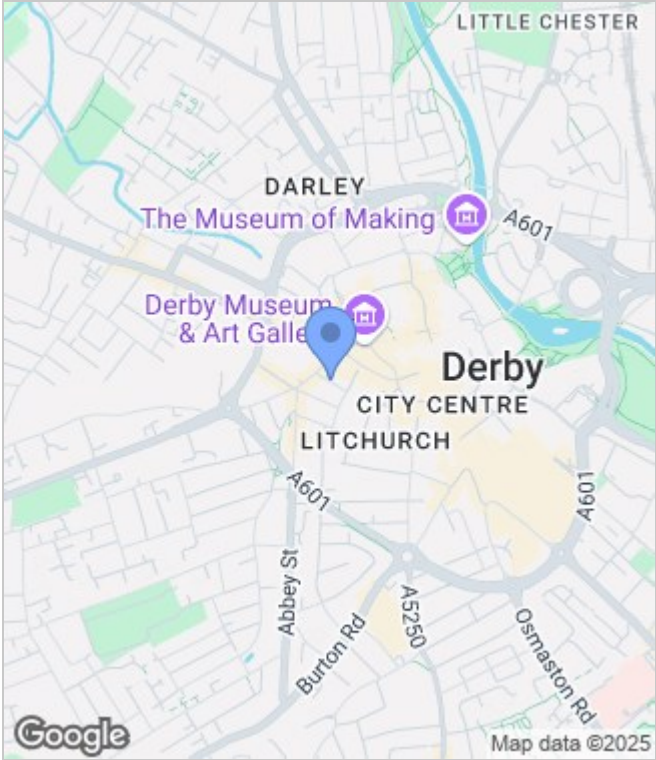
Situation

Unfurnished  
Council Tax Band: A  
Available: 5th August 2025

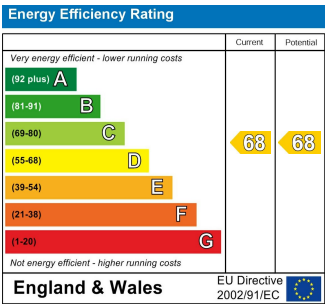
Floor Plans



Area Map



Energy Performance Graph



These particulars, whilst believed to be accurate are set out as a general outline only for guidance and do not constitute any part of an offer or contract. Intending purchasers should not rely on them as statements of representation of fact, but must satisfy themselves by inspection or otherwise as to their accuracy. No person in this firms employment has the authority to make or give any representation or warranty in respect of the property.