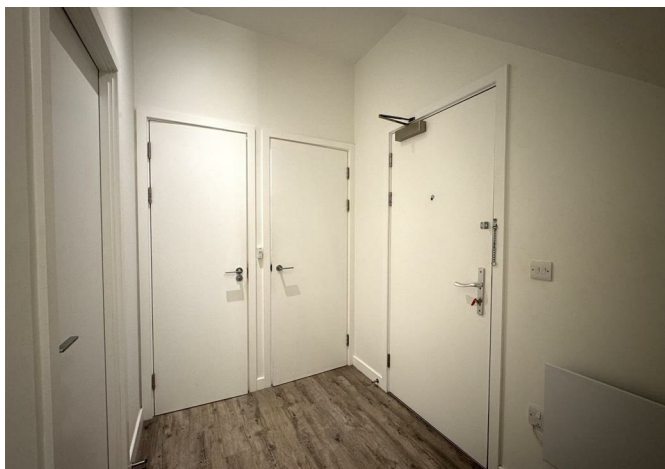


BRICK
MANAGEMENT + LETTINGS



Flat 40 Wraysbury House 4-16 London Road, Staines-Upon-Thames, London, TW18 4BP

£1,400 Per month



Flat 40 Wraysbury House 4-16 London Road, Staines-Upon-Thames, London, TW18

£1,400^{APR} Per month

New to the market, this impressive spacious one bedroom duplex apartment is located in the popular Wraysbury House development.

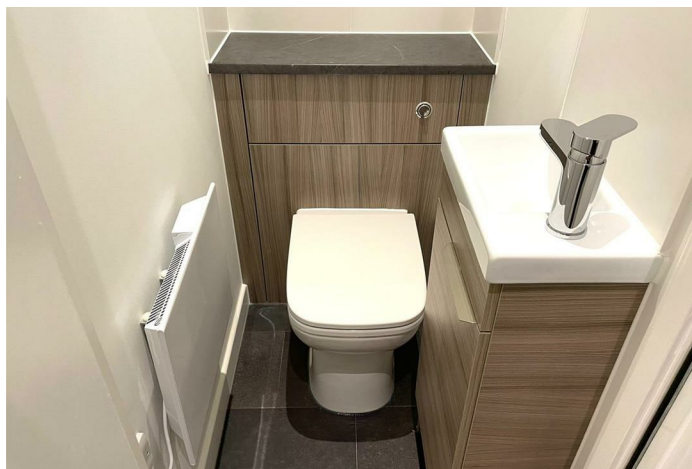
The property benefits from a small entrance hallway leading to an open plan living area with wooden flooring, stylish fully fitted grey kitchen, downstairs WC, large first floor double bedroom with fitted wardrobe, en-suite bathroom, neutral decoration throughout and secure video entry system.

The property has secure underground parking with one allocated space.

Wraysbury House is just a short walk from Staines town centre and the mainline station. The M25 is just a five minute drive away, offering easy access to Heathrow Airport.

Description

Situation

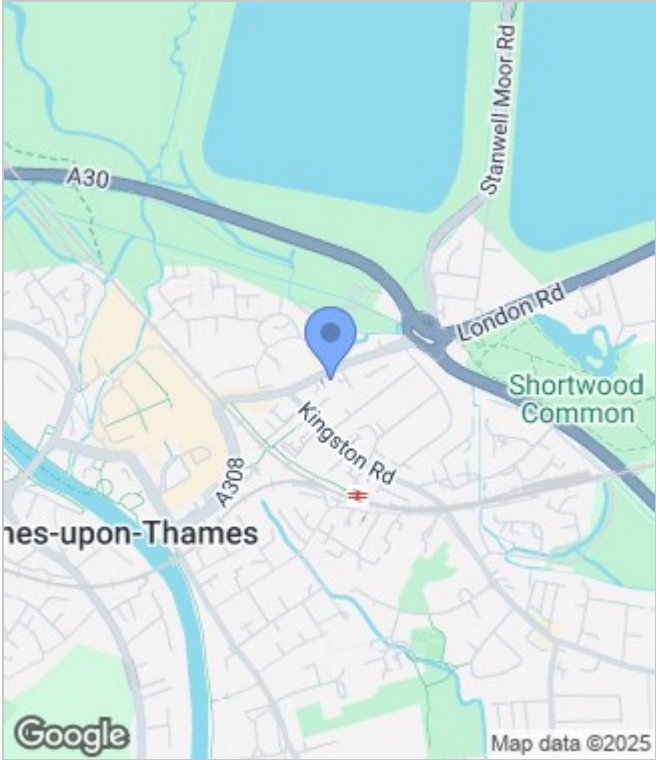


Unfurnished
Council Tax Band:
Available: 3rd September 2025

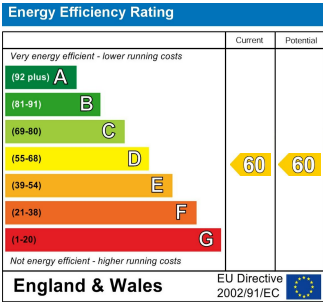
Floor Plans



Area Map



Energy Performance Graph



These particulars, whilst believed to be accurate are set out as a general outline only for guidance and do not constitute any part of an offer or contract. Intending purchasers should not rely on them as statements of representation of fact, but must satisfy themselves by inspection or otherwise as to their accuracy. No person in this firms employment has the authority to make or give any representation or warranty in respect of the property.