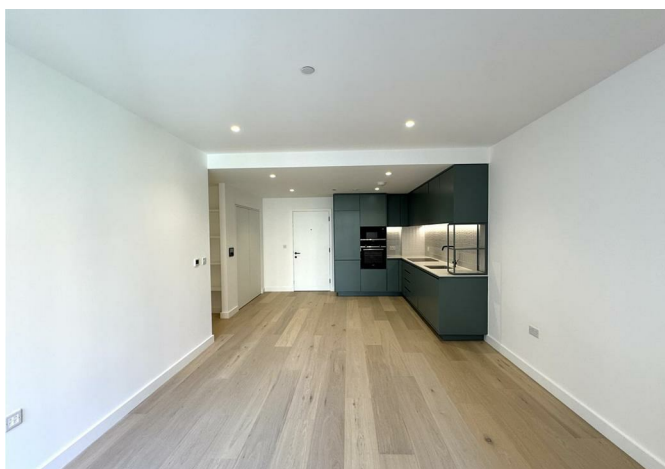




28 The Ashbee 20 Parkview Avenue, London, NW2 8AG

£1,995 Per month



28 The Ashbee 20 Parkview Avenue, London, NW2 8AG

£1,995 Per month

New to the market this spacious second floor furnished one bedroom apartment is located in the newly built 'The Ashbee' designed by globally acclaimed architects Squire and Partners.

This impressive apartment benefits from a large open plan living space with wooden flooring and Juliet balcony with communal garden / courtyard views, stylish fully integrated kitchen, separate large utility cupboard and shelving, double bedroom with fitted wardrobe, and a luxury bathroom suite.

The apartment has underfloor heating, neutral decoration and a video entry intercom panel.

Residents have access to an on site concierge, gymnasium, communal lounge, private dining room and cinema room.

The Ashbee is located directly opposite the popular Claremont Park, just a short walk from Brent Cross station, offering 20 minute access in to central London. Brent Cross shopping centre is world renowned and you have numerous local restaurants and bars to choose from.

* Sorry no allocated parking with this unit *

Description



Situation



Furnished
Council Tax Band: New Build
Available: 8th September 2025

Floor Plans



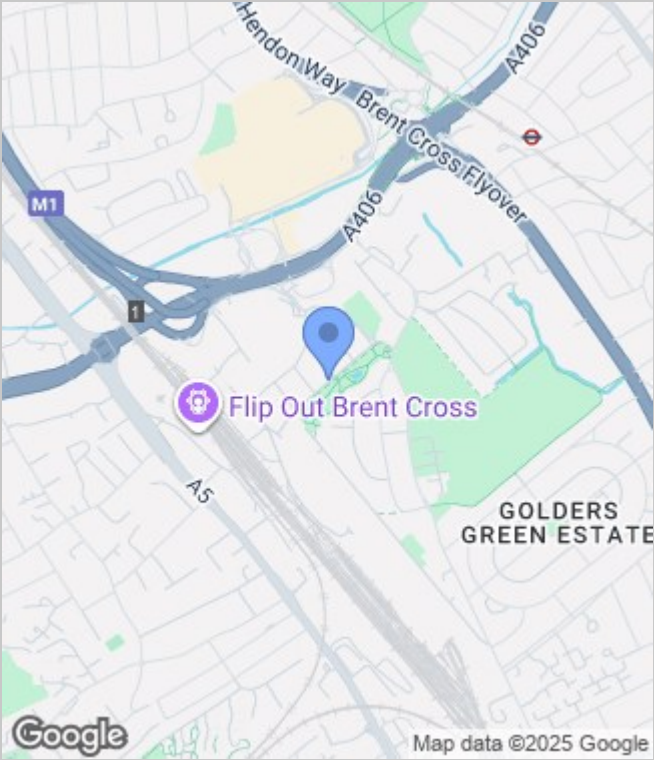
Apartment 28
Second Floor – One Bedroom

Total Area
56.9 sqm / 612 sq ft

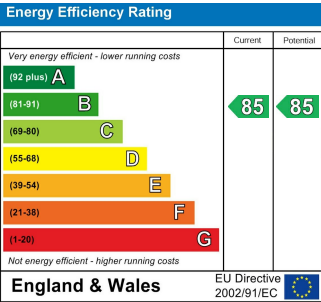
Living / Kitchen
6.7m x 3.95m / 22ft x 13ft

Master Bedroom
3.78m x 3.55m / 12ft 5" x 11ft 8"

Area Map



Energy Performance Graph



These particulars, whilst believed to be accurate are set out as a general outline only for guidance and do not constitute any part of an offer or contract. Intending purchasers should not rely on them as statements of representation of fact, but must satisfy themselves by inspection or otherwise as to their accuracy. No person in this firms employment has the authority to make or give any representation or warranty in respect of the property.