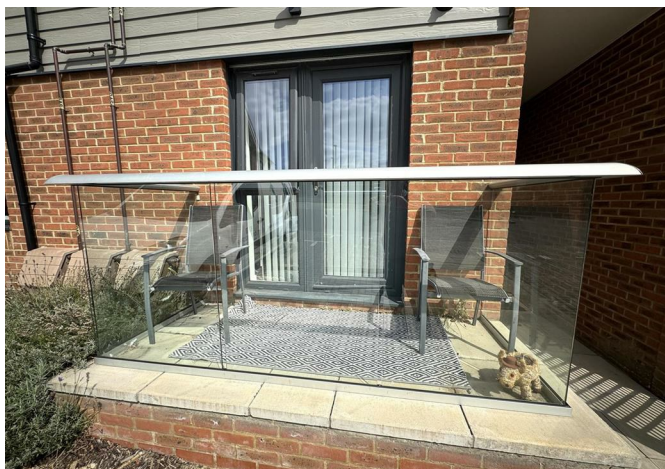




14 The Courtyard Eastwood Road, Rayleigh, Essex, SS6 7FU

£1,550 Per month



14 The Courtyard Eastwood Road, Rayleigh, Essex, SS6 7FU

£1,550 Per month

New to the market, this impressive two bedroom unfurnished executive apartment, is located in the sought after 'The Courtyard' development.

The apartment itself benefits from an entrance hallway with utility cupboard leading to an open plan living space with contemporary flooring and small balcony, stylish kitchen with integrated appliances, two double bedrooms, two luxury bathrooms, secure entry phone access and neutral decoration throughout.

Each apartment in the development comes with an allocated parking space.

The Courtyard is a gated development, just a short walk from Rayleigh town centre and mainline railway station.

Description



Situation

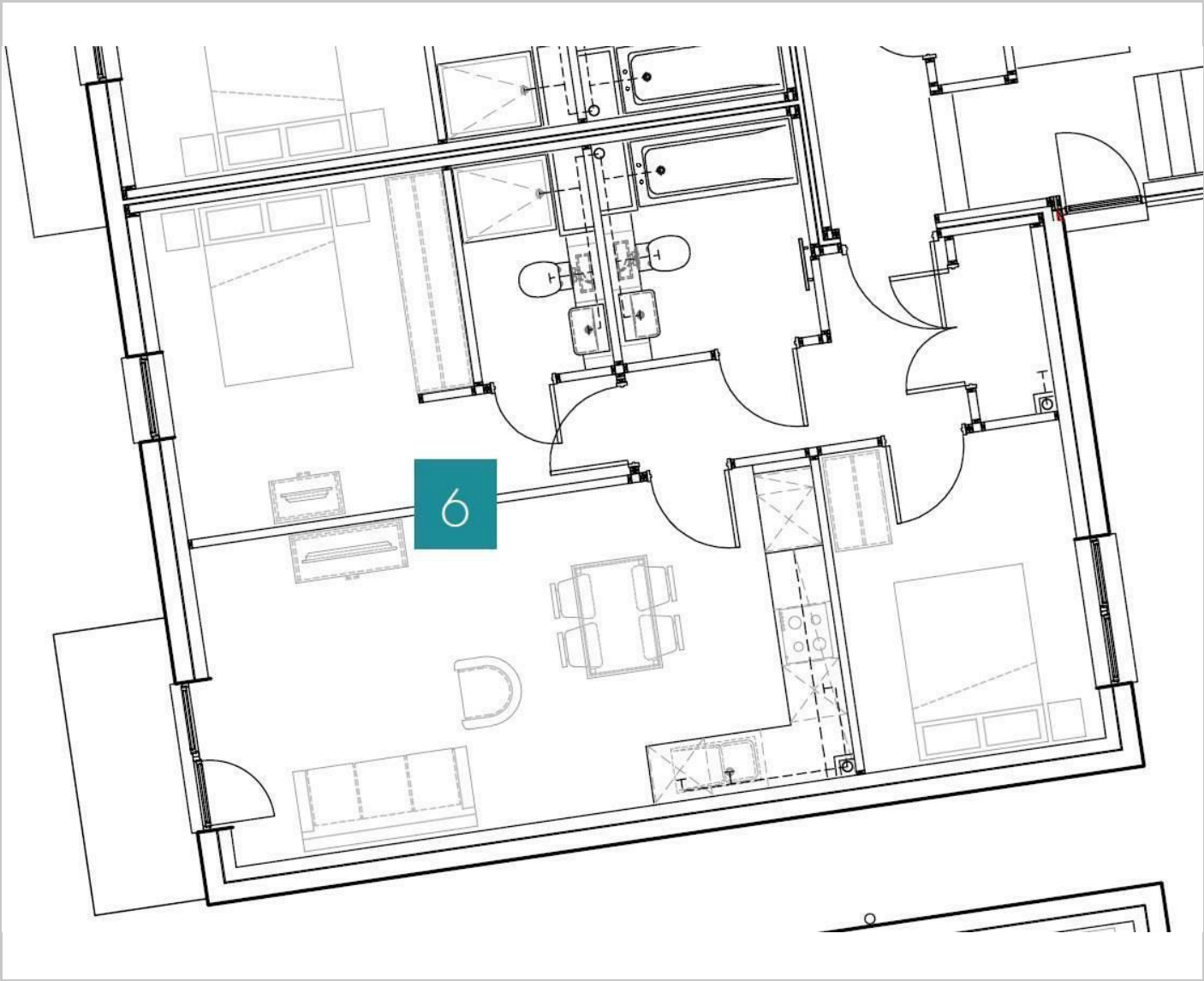


Unfurnished

Council Tax Band: C

Available: 10th October 2025

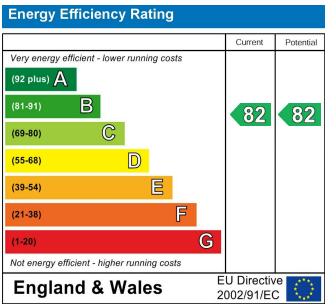
Floor Plans



Area Map



Energy Performance Graph



These particulars, whilst believed to be accurate are set out as a general outline only for guidance and do not constitute any part of an offer or contract. Intending purchasers should not rely on them as statements of representation of fact, but must satisfy themselves by inspection or otherwise as to their accuracy. No person in this firms employment has the authority to make or give any representation or warranty in respect of the property.