



Ft 8 The Courtyard Eastwood Road, Rayleigh, Essex, SS6 7FU

£1,575 Per month





## Ft 8 The Courtyard Eastwood Road, Rayleigh, Essex, SS6 7FU

**£1,575 Per month**

New to the market, this impressive spacious unfurnished ground floor two bedroom executive apartment, is located in the sought after 'The Courtyard' development.

The apartment itself benefits from a hallway with large storage / utility cupboard leading to a large open plan living space with contemporary flooring and doors to communal patio / garden area, stylish grey kitchen with appliances, two double bedrooms, two luxury bathrooms, secure entry phone access and neutral decoration throughout.

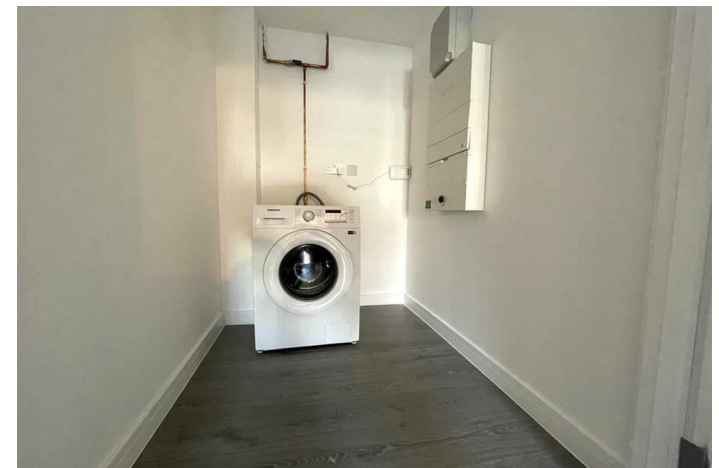
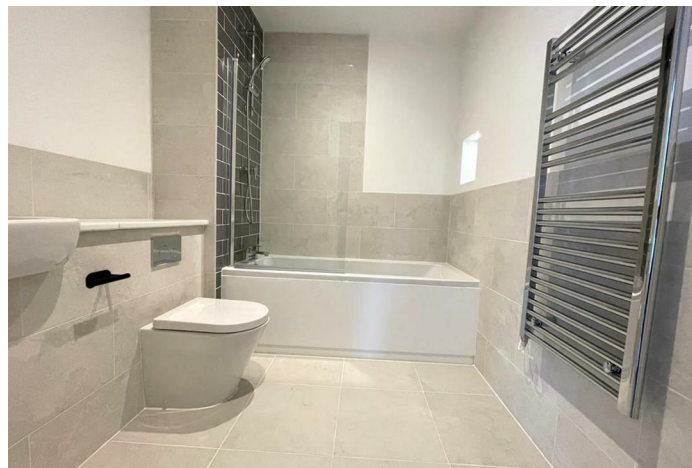
Each apartment in the development comes with an allocated parking space.

The Courtyard is just a few minutes walk from Rayleigh town centre and the mainline railway station.

## Description



## Situation



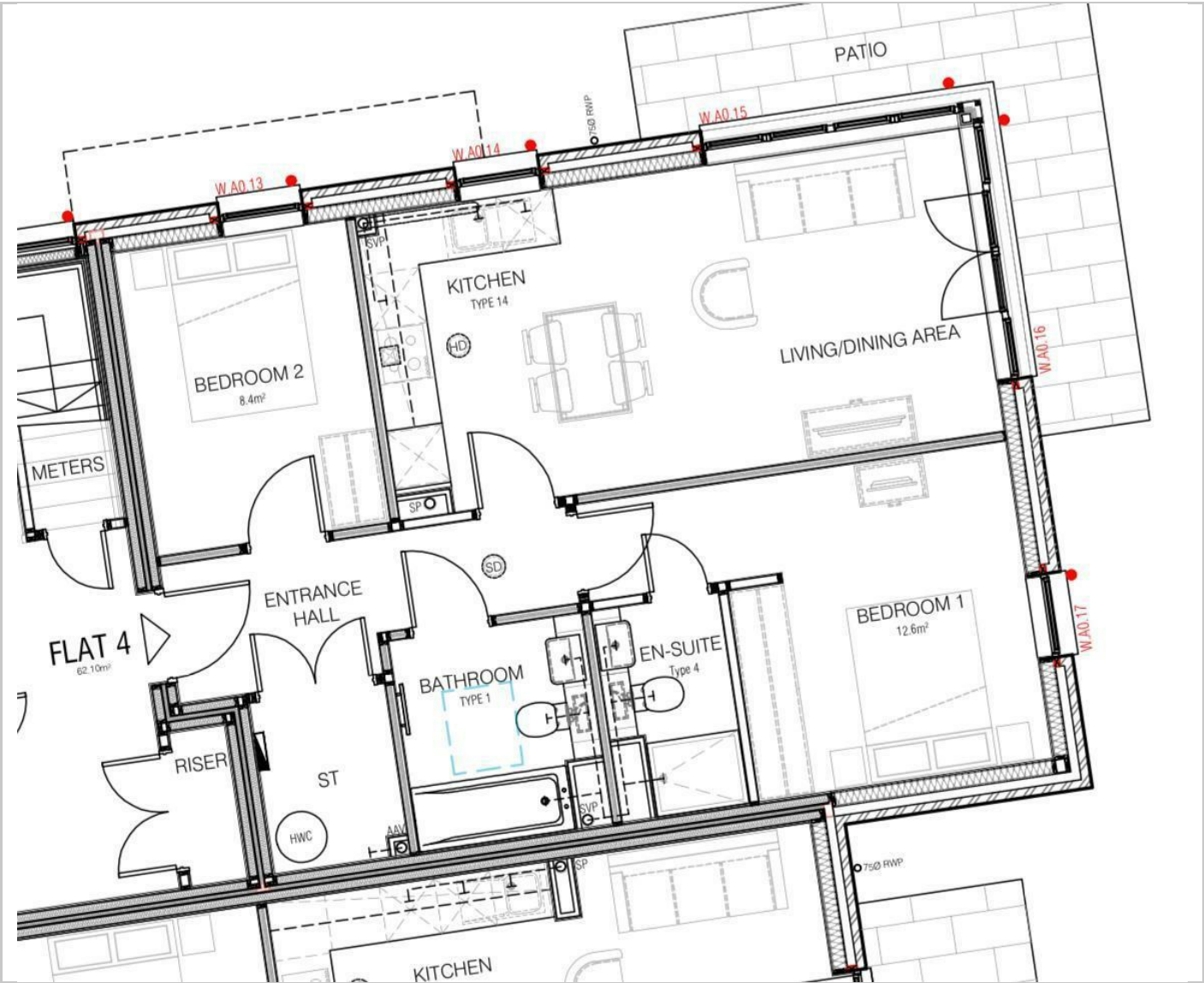
Unfurnished

Council Tax Band: New Build

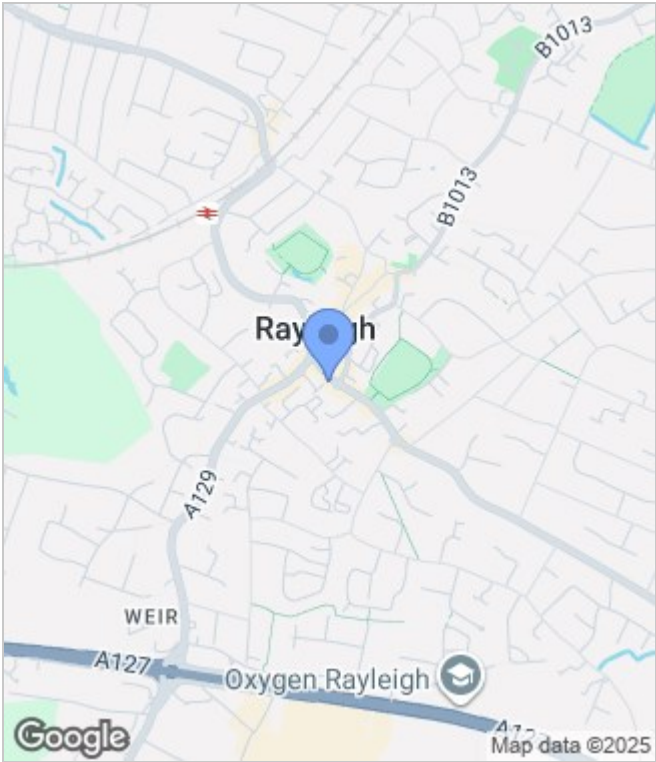
Available: 3rd October 2025



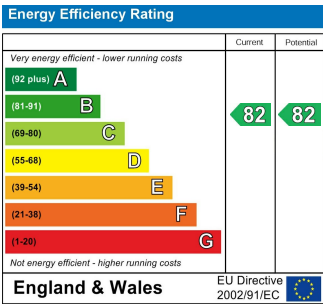
Floor Plans



Area Map



Energy Performance Graph



These particulars, whilst believed to be accurate are set out as a general outline only for guidance and do not constitute any part of an offer or contract. Intending purchasers should not rely on them as statements of representation of fact, but must satisfy themselves by inspection or otherwise as to their accuracy. No person in this firms employment has the authority to make or give any representation or warranty in respect of the property.