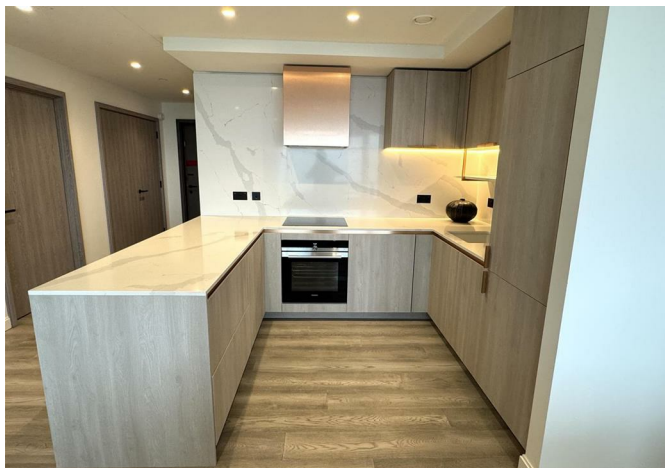




46-07 Aspen Marsh Wall, Canary Wharf, London, E22 2AG

£4,900 Per month



46-07 Aspen Marsh Wall, Canary Wharf, London, E22 2AG

£4,900 Per month

New to the market, this stunning 46th floor spacious three bedroom furnished executive apartment is located in the sought after newly built Aspen, Canary Wharf development.

The apartment itself benefits from an entrance hall with utility cupboard leading to a large open plan living area with dark wooden flooring, designer fully integrated grey kitchen with marble work tops and breakfast bar, large master bedroom with dressing area and luxury en-suite bathroom, two further double bedrooms with fitted wardrobes, luxury bathroom suite, secure video entry system and neutral decoration throughout.

The apartment offers stunning far reaching views across the city of London from the living area and all three bedrooms.

On site facilities include a Concierge service, Gymnasium, The Aspen Club Spa & Vitality Pool (late 2025), Business lounge and screening room (late 2025), Games room and Private dining room (late 2025).

Aspen is just a few minutes walk from numerous local restaurants and amenities, plus Canary Wharf underground station / Elizabeth line and DLR, giving 15 minute access to London city Airport.

Description



Situation



Furnished

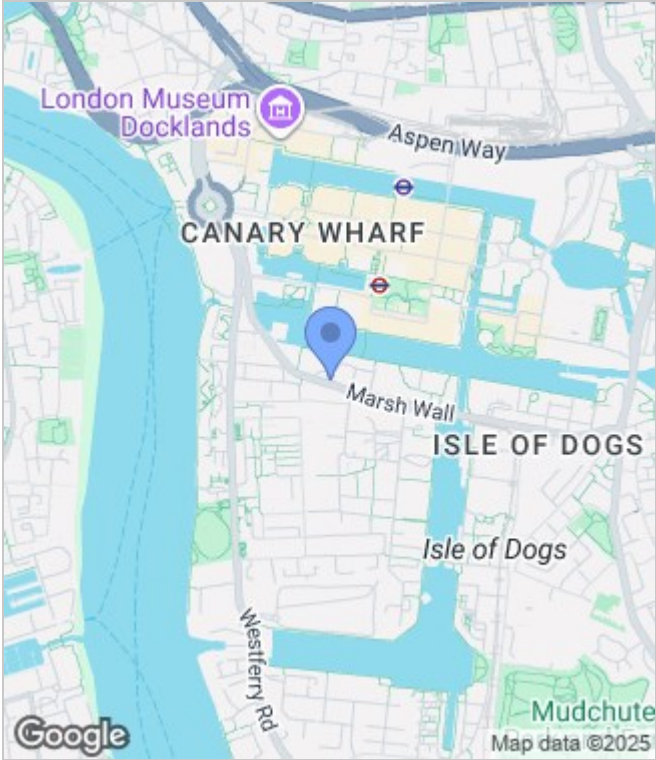
Council Tax Band: New Build

Available: 8th December 2025

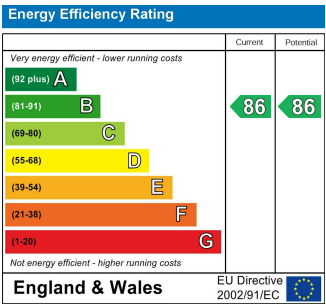
Floor Plans



Area Map



Energy Performance Graph



These particulars, whilst believed to be accurate are set out as a general outline only for guidance and do not constitute any part of an offer or contract. Intending purchasers should not rely on them as statements of representation of fact, but must satisfy themselves by inspection or otherwise as to their accuracy. No person in this firms employment has the authority to make or give any representation or warranty in respect of the property.