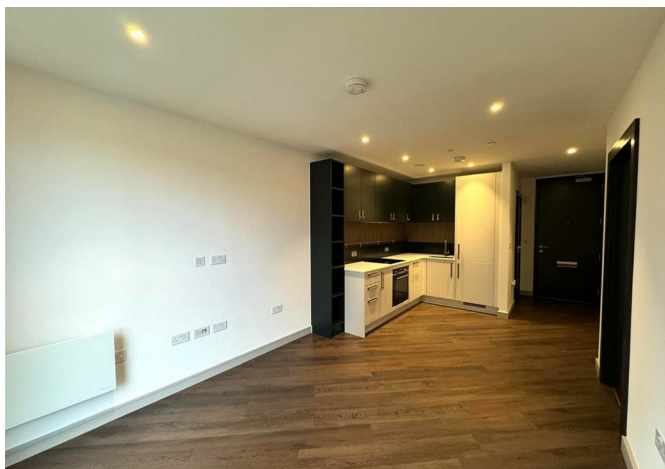
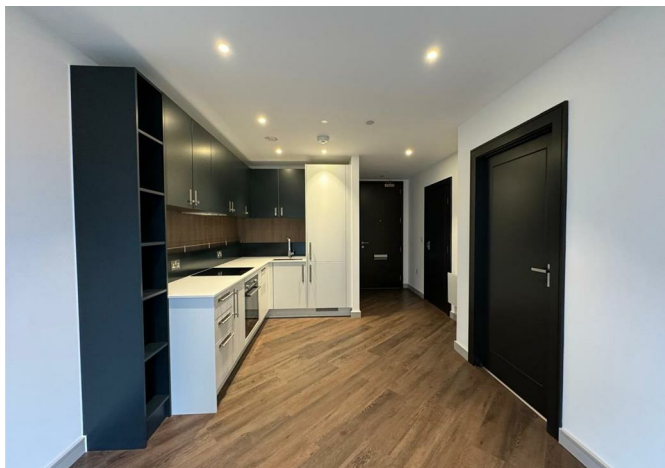




47 Lily House Eden Grove, Staines-Upon-Thames, Surrey, TW18 4ZT

£1,485 Per month



47 Lily House Eden Grove, Staines-Upon-Thames, Surrey, TW18 4ZT

£1,485 Per month

New to the market, this stunning unfurnished sixth floor one bedroom executive apartment is located in the sought after Berkley Homes Eden Grove development.

The property itself benefits from a small entrance hall with large storage cupboard leading to an open plan living area with Karndean wooden flooring, stylish fully integrated black and white kitchen, double bedroom with large built in wardrobe, luxury bathroom suite with bath and rain shower plus utility cupboard, secure video phone entry system and neutral decoration throughout.

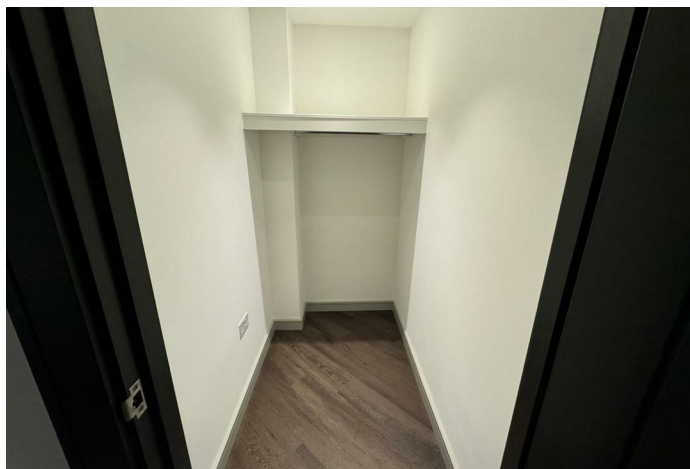
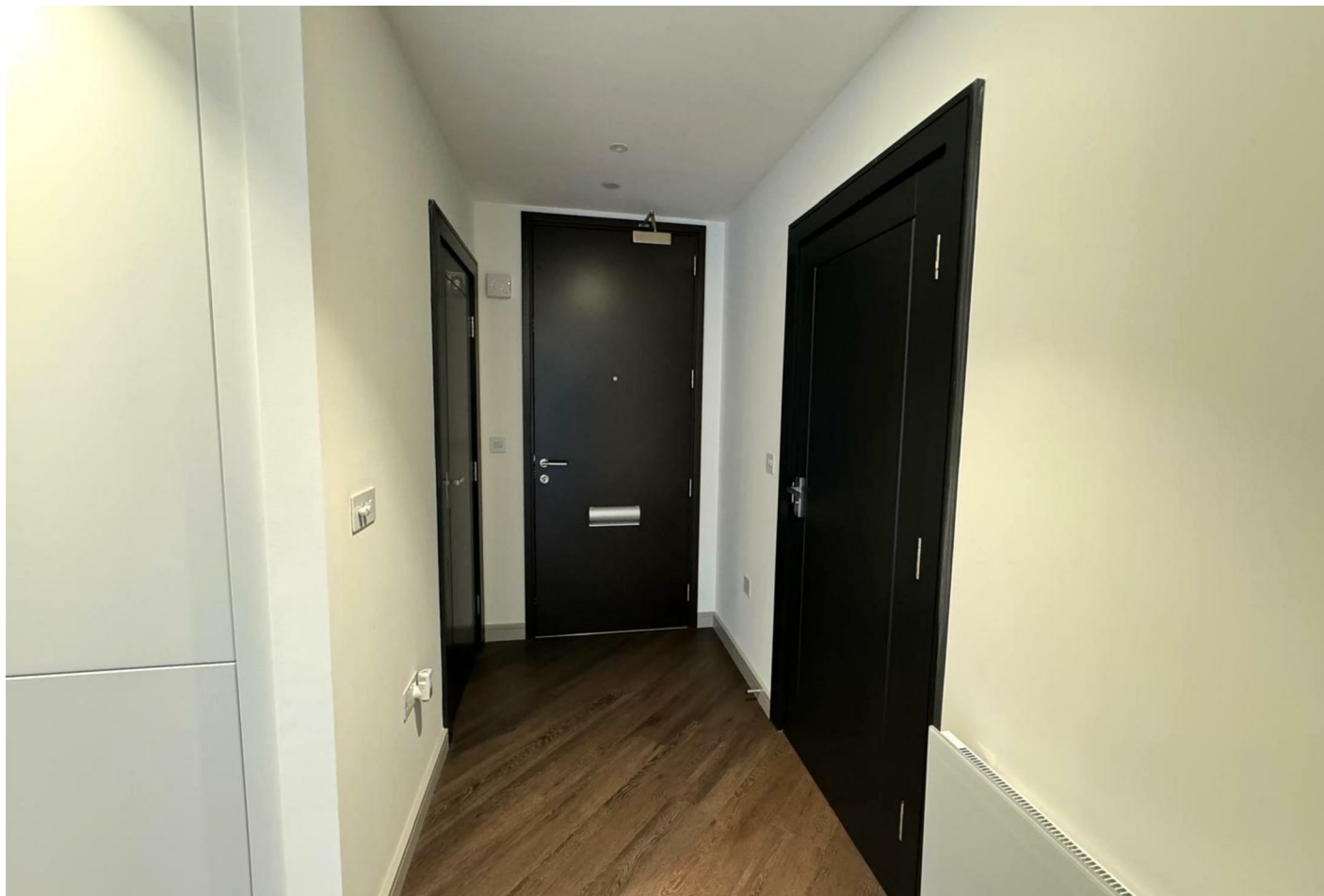
Residents have access to an on site 24 hour concierge service, co-working facility with private meeting room, large fully equipped gymnasium, cinema room, communal courtyard garden and terrace and bike storage.

* Sorry this property does not come with allocated parking *

Eden Grove is just a five minute walk from Staines town centre and the mainline railway station. The M25 is a five minute drive away, offering easy access to Heathrow Airport.

Description

Situation



Unfurnished

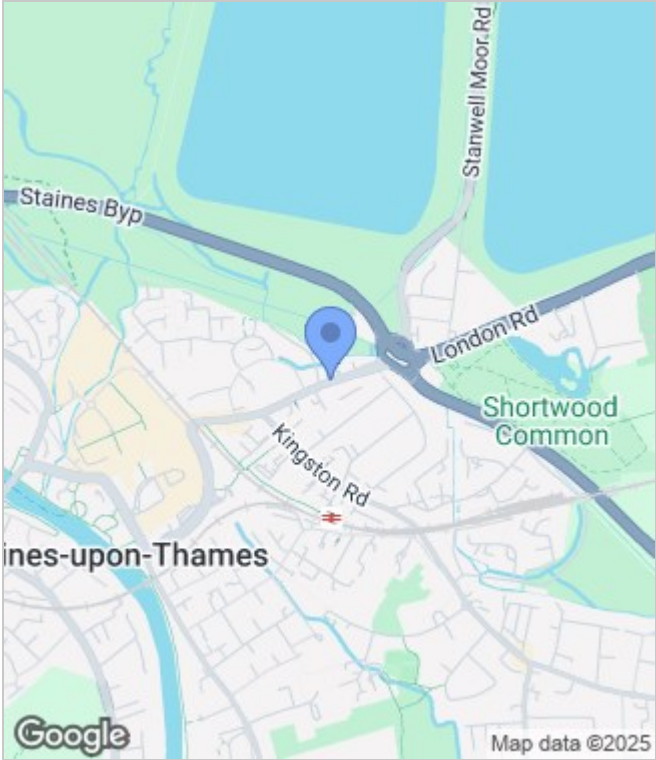
Council Tax Band: New Build

Available: 19th November 2025

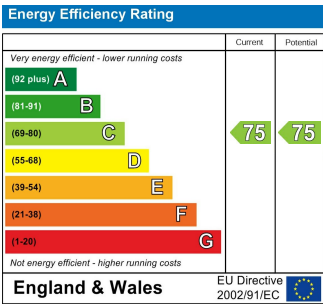
Floor Plans



Area Map



Energy Performance Graph



These particulars, whilst believed to be accurate are set out as a general outline only for guidance and do not constitute any part of an offer or contract. Intending purchasers should not rely on them as statements of representation of fact, but must satisfy themselves by inspection or otherwise as to their accuracy. No person in this firms employment has the authority to make or give any representation or warranty in respect of the property.